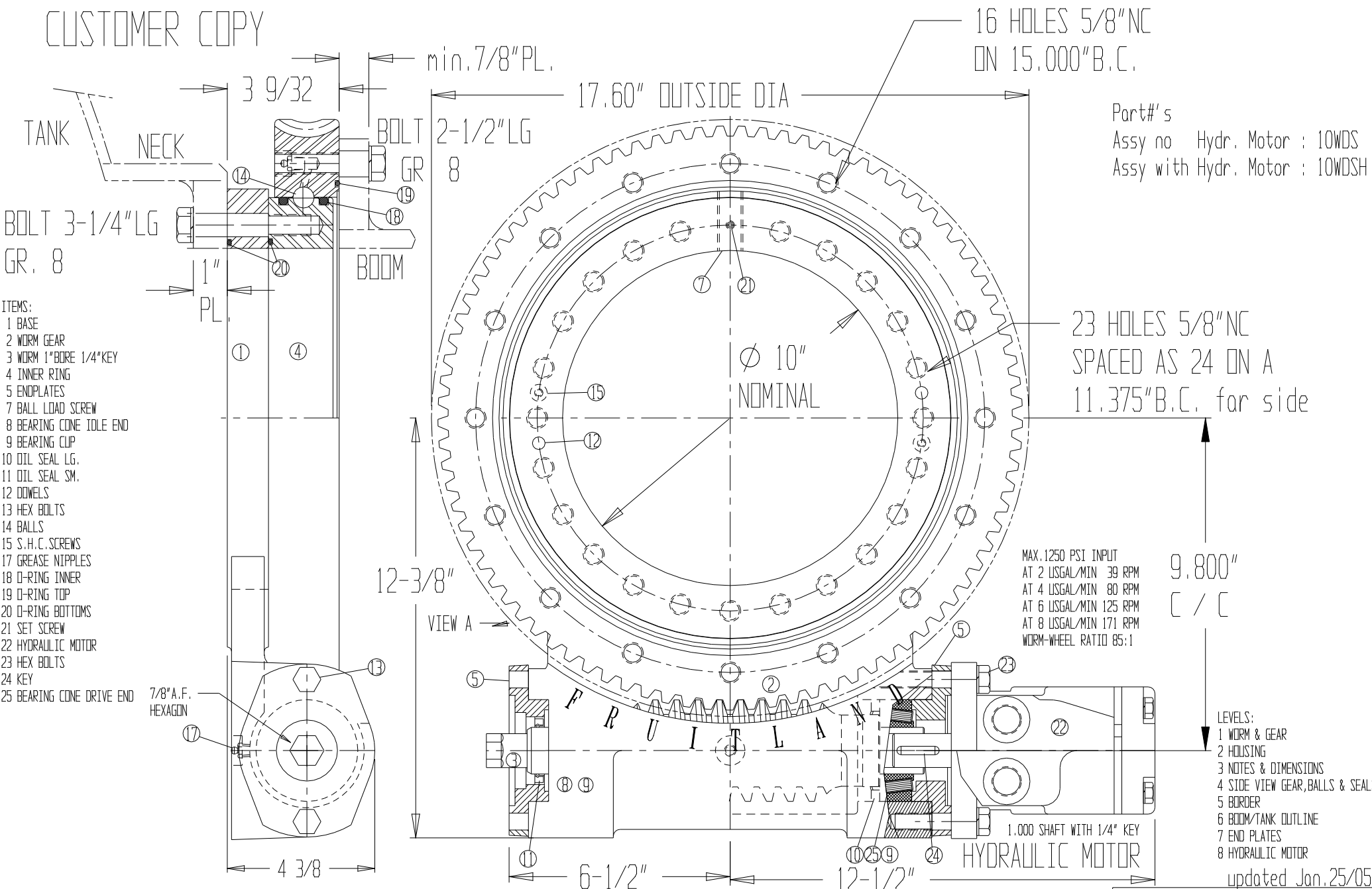


CUSTOMER COPY



Part#'s
 Assy no Hydr. Motor : 10WDS
 Assy with Hydr. Motor : 10WDSH

- ITEMS:
- 1 BASE
 - 2 WORM GEAR
 - 3 WORM 1" BORE 1/4" KEY
 - 4 INNER RING
 - 5 ENOPLATES
 - 7 BALL LOAD SCREW
 - 8 BEARING CONE IDLE END
 - 9 BEARING CLIP
 - 10 OIL SEAL LG.
 - 11 OIL SEAL SM.
 - 12 DOWELS
 - 13 HEX BOLTS
 - 14 BALLS
 - 15 S.H.C. SCREWS
 - 17 GREASE NIPPLES
 - 18 O-RING INNER
 - 19 O-RING TOP
 - 20 O-RING BOTTOMS
 - 21 SET SCREW
 - 22 HYDRAULIC MOTOR
 - 23 HEX BOLTS
 - 24 KEY
 - 25 BEARING CONE DRIVE END

- LEVELS:
- 1 WORM & GEAR
 - 2 HOUSING
 - 3 NOTES & DIMENSIONS
 - 4 SIDE VIEW GEAR, BALLS & SEALS
 - 5 BORDER
 - 6 BOOM/TANK OUTLINE
 - 7 END PLATES
 - 8 HYDRAULIC MOTOR

updated Jan. 25/05

FTM RESERVES THE RIGHT TO MAKE CHANGES WITHOUT NOTICE

Max. Capacity 30.3 kNm
 (22,350 ft-lb)

APPROX. WEIGHT
 155 lbs

FRUITLAND TOOL & MFG. 324 Lesslie Ave. STONEY CREEK ONT. (905) 882-8552			
TITLE: 10" WORM DRIVE ROTATING SEAL			
MTB drawn: 02/11/03	by: HANS	DWG.#	REV.
MTB checked: 01/25/05	by: WALTER	CUSTOMER SHEET 0	
Sheet: 1 of 1	Scale: FULL	Customer: FRUITLAND TOOL & MFG.	Computer File: 10WDS.CUC