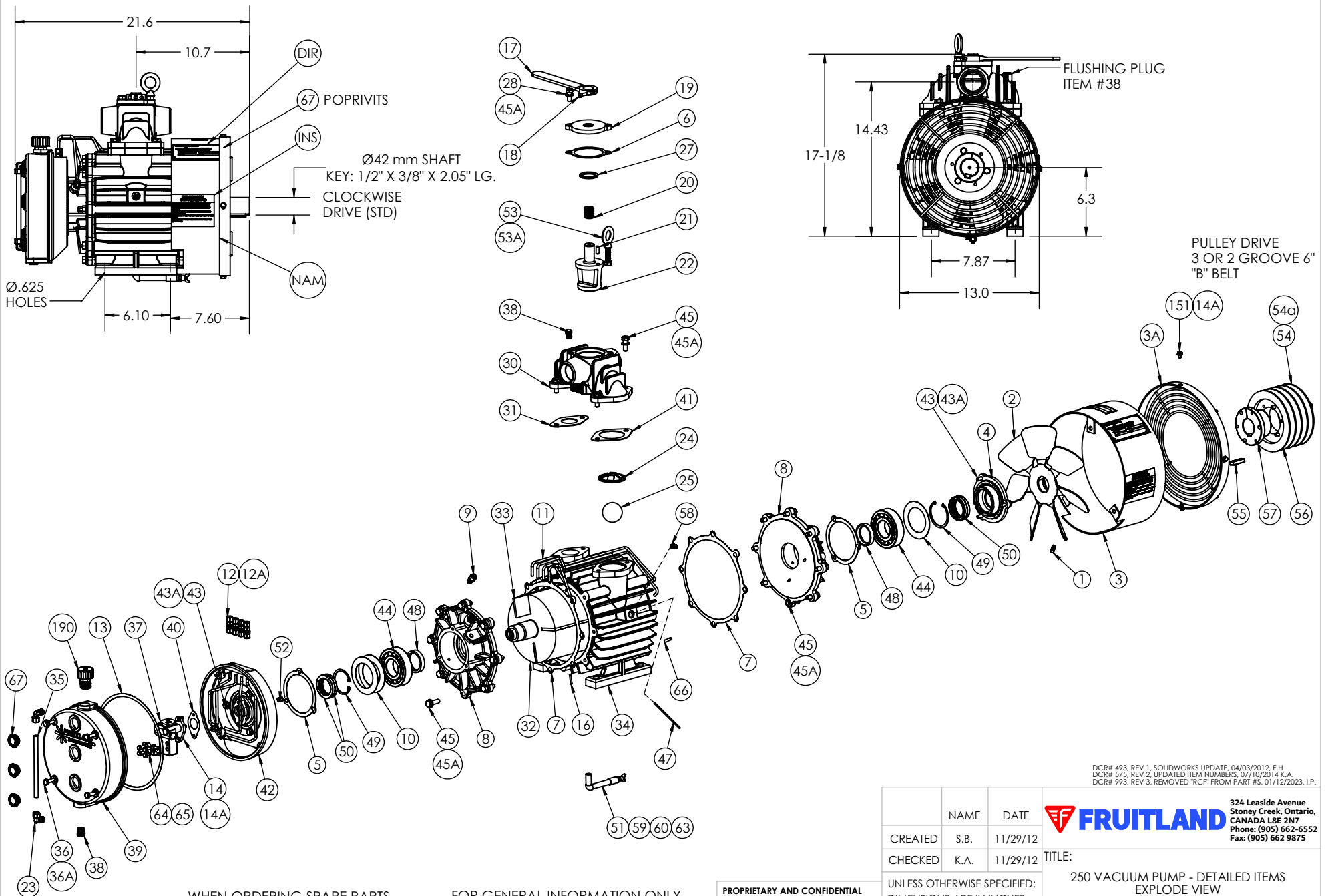


250L & 250R VACUUM PUMP



WHEN ORDERING SPARE PARTS
ALWAYS STATE MODEL AND
SERIAL NUMBER OF PUMP.

FOR GENERAL INFORMATION ONLY
WE RESERVE THE RIGHT TO MAKE
CHANGES

PROPRIETARY AND CONFIDENTIAL
THE INFORMATION CONTAINED IN THIS
DRAWING IS THE SOLE PROPERTY OF
FRUITLAND MANUFACTURING. ANY
REPRODUCTION IN PART OR AS A
WHOLE WITHOUT THE WRITTEN
PERMISSION OF FRUITLAND MFG. IS
PROHIBITED.

DCR# 493, REV 1, SOLIDWORKS UPDATE, 04/03/2012, F.H.
DCR# 575, REV 2, UPDATED ITEM NUMBERS, 07/10/2014, K.A.
DCR# 993, REV 3, REMOVED "RCF" FROM PART #S, 01/12/2023, I.P.


	NAME	DATE	FRUITLAND 324 Leaside Avenue Stoney Creek, Ontario, CANADA L8E 2N7 Phone: (905) 662-6552 Fax: (905) 662-9875
CREATED	S.B.	11/29/12	
CHECKED	K.A.	11/29/12	
UNLESS OTHERWISE SPECIFIED: DIMENSIONS ARE IN INCHES TOLERANCES: FRACTIONAL OR .X = ±.015 .XX = ±.010 .XXX = ±.005			TITLE: 250 VACUUM PUMP - DETAILED ITEMS EXPLODE VIEW
MATERIAL	--		DWG. NO. 250-BOM
			SCALE: 1:16
			WEIGHT:--
			SHEET 1 OF 2

ITEM #	PART #	DESCRIPTION	QTY.
1	RF500-48B	S.H.C.S. - 5/16"-16 NF x 1" LONG - PLAIN	1
2	RF500-33 *	FAN ASSEMBLY	1
3	RF250-34 *	FAN SHROUD	1
3A	RF250-35	FAN GUARD - (MODIFIED RF500-35)	1
4	RF500-15	SEAL HOUSING - DRIVE END	1
5	RF500-70	GASKET - SEAL HOUSING	2
6	RF250-248	GASKET - DIVERTER CAP	1
7	RF500-140	GASKET - HOUSING END CAP	2
8	RF250-3	HOUSING END CAP	2
9	RF500-50A	COMPRESSION FITTING - 1/8" NPT x 1/4" TUBE - BRASS	4
10	RF500-20A	BELLVILLE SPRING	4
11	RF250-51A *	OIL LINES SET - NO FITTINGS	1
12	RF500-52A	BULKHEAD FITTING	4
12A	U-SEAL	U-SEAL WASHER FOR OILTANK BULKHEAD	4
13	RF500-26	GASKET - OIL PUMP COVER	1
14	RF500-28A	HEX BOLT - M6 x 1.0mm x 16mm LONG - Z.P.	5
14A	RF500-280A	LOCKWASHER (SPLIT) - M6 - Z.P.	6
16	RF500-72A	ROLL PIN - Ø5/32" x 1-1/4" LONG - ROTOR SHAFT	1
17	RF250-250	DIVERTER VALVE LEVER ASSEMBLY	1
18	RF500-130A	S.H.C.S. - 1/4"-28 NF x 3/4" LONG	1
19	RF250-241	DIVERTER VALVE CAP	1
20	RF250-246	DIVERTER VANE SPRING	1
21	RF250-247A	SPRING PIN - Ø5/16" x 5/8" - DIVERTER VANE	1
22	RF250-243	DIVERTER VANE	1
23	RF500-32A	SIGHT TUBE ELBOW FITTING	2
24	RF250-249A	BALL RETAINER	1
25	RF250-252A	VALVE BALL - Ø2"	1
27	RF250-244A	OIL SEAL - DIVERTER VANE	1
28	RF500-59A	HEX BOLT - M10 x 1.5mm x 25mm LONG - Z.P.	1
30	RF250-240	DIVERTER HOUSING	1
31	RF250-238	GASKET - DIVERTER INTAKE FLANGE	1
32	RF250-4	250 ROTOR ASSEMBLY	1
33	RF250-6A	VANES	4
34	RF250-1	250 PUMP HOUSING	1
35	RF500-25A	SIGHT TUBE - Ø3/8" OD - CLEAR	1
36	RF500-24A	HEX BOLT - M8 x 1.25mm x 90mm LONG - Z.P.	4
36A	RF500-221A	FLAT WASHER - M8 - ALUMINUM	4
37	RF500-29	OIL PUMP - BI-DIRECTIONAL	1
38	RF500-69A	PIPE PLUG - 1/4" NPT	1
39	RF500-23	OIL PUMP COVER	1
40	RF500-27	GASKET - OIL PUMP	1
41	RF250-251	GASKET - DIVERTER EXHAUST FLANGE	1

ITEM #	PART #	DESCRIPTION	QTY.
42	RF500-22 *	SEAL HOUSING - NON-DRIVE END	1
43	RF500-48A	HEX BOLT - M8 x 25mm LONG - Z.P.	6
43A	RF120-96A	LOCKWASHER (SPLIT) - M8 - Z.P.	3
44	RF500-19A	ROLLER BEARING	2
45	RF500-67A	HEX BOLT - M10 x 30mm LONG - Z.P.	20
45A	RF120-94A	LOCKWASHER (SPLIT) - M10 - Z.P.	22
47	RF500-81	VANE WEAR TEST ROD	1
48	RF500-8	ROTOR COLLAR	2
49	RF500-35A	SNAP RING - ROTOR SHAFT	2
50	RF500-225A	OIL SEAL - ROTOR SHAFT	4
51	RF250-32A	90° STREET ELBOW (Mx F) - 1/4" NPT - BRASS	1
52	RF500-80A	OIL PUMP COUPLING	1
53	RF500-37A	EYEBOLT - M10	1
53a	RF500-137A	HEX NUT - M10 - Z.P.	1
54	RF500-0	HEX BOLT - 5/16"-18 NC x 1-1/2" LONG & LW incl. w/ ITEM 57	3
55	RF500-74	KEY - 3/8" x 1/2" x 2" - incl. w. ITEM 57	1
56	RF250-39A	6" SHEAVE, 3 GROOVE (MACHINED FROM 4 GROOVE)	1
57	SK 42	TAPER BUSHING - 42mm	1
58	RF250-69A	PIPE PLUG - 1/8" NPT - SQ. DRIVE	4
59	RF250-30A	PIPE NIPPLE - 1/4" NPT x 4-1/2" LONG	1
60	RF250-73A	PIPE COUPLING - 1/4" NPT	1
63	RF500-82A	DRAIN COCK VALVE - 1/4" NPT	1
64	250-6A	HOLLOW BOLT - M6	4
65	250-6	SOLDER FITTING (FOR OIL PUMP)	4
66	RF500-72B	ROLL PIN - Ø1/4" x 3" LONG - FOR OIL PUMP	1
67	RF500-23SG	SIGHT GLASS	3
151	RF120-102A	HEX BOLT - M6 x 10mm LONG - Z.P.	4
190	RF500-190P	BREATHER FILLER CAP FOR RESERVOIR	1
INS	RF500-INS	INSTRUCTION TAG	1
MAN	RF500-MAN	MANUAL	1
DIR	RF500-DIR	DIRECTION TAG	1
NAM	RF500-NAM	NAME PLATE	1

* SPECIFY PUMP ROTATION "L" OR "R" AND MOUNTING DIRECTION (SIDE OR UPRIGHT)

PROPRIETARY AND CONFIDENTIAL
 THE INFORMATION CONTAINED IN THIS DRAWING IS THE SOLE PROPERTY OF FRUITLAND MANUFACTURING. ANY REPRODUCTION IN PART OR AS A WHOLE WITHOUT THE WRITTEN PERMISSION OF FRUITLAND MFG. IS PROHIBITED.

	NAME	DATE	 <small>324 Leaside Avenue Stoney Creek, Ontario, CANADA L8E 2N7 Phone: (905) 662-6552 Fax: (905) 662 9875</small>
CREATED	I.P.	09/19/2022	
CHECKED			TITLE:
UNLESS OTHERWISE SPECIFIED: DIMENSIONS ARE IN INCHES TOLERANCES: FRACTIONAL OR .X = ±.015 .XX = ±.010 .XXX = ±.005			250 VACUUM PUMP - BOM
MATERIAL			DWG. NO.
--			250-BOM
			REV
			3
SCALE: 1:16			WEIGHT:--
SHEET 2 OF 2			