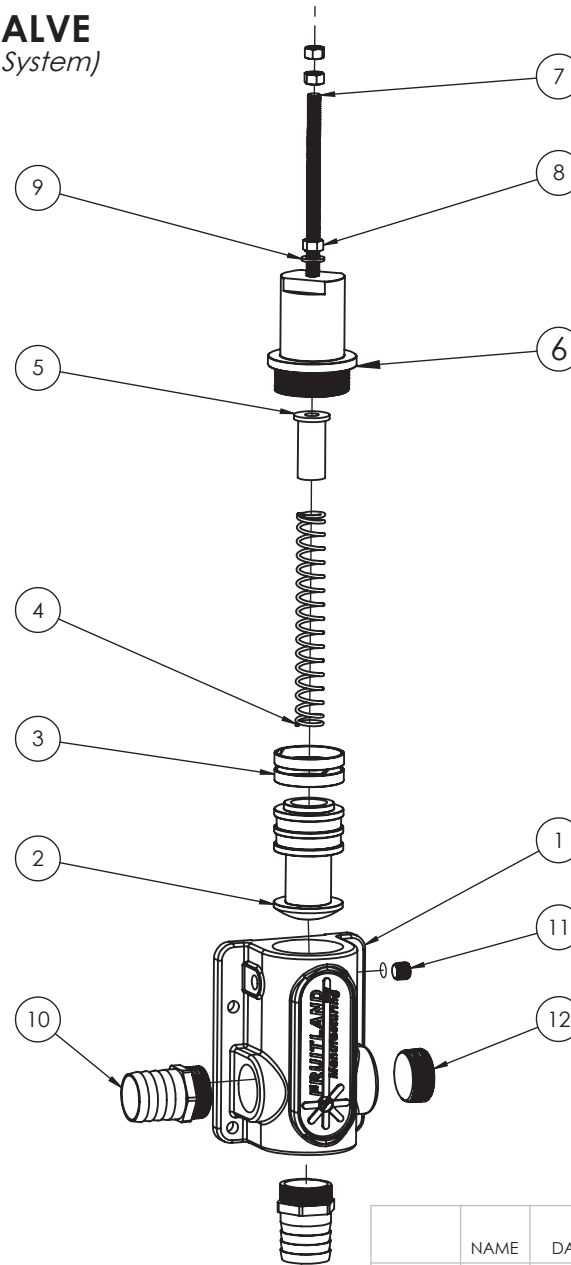
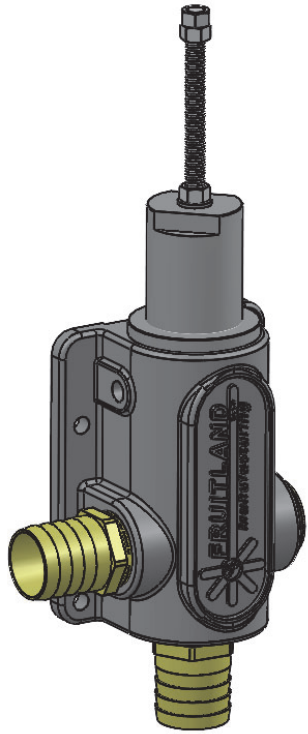


# FRUITLAND VACS VALVE

(Vacuum Assisted Cooling System)


**PART # RF870-AI**



DCR #966, REV. 1: REMOVED COMPRESSION FITTING & UPDATED BOM, 10/04/2022, I.P.

ITEM NO.	PART NUMBER	DESCRIPTION	QTY.
1	AI-870-1	Housing	1
2	AI-870-2	Piston	1
3	AI-870-3	Piston Ring	2
4	AI-870-4	Spring	1
5	AI-870-5	Spring Seat	1
6	AI-870-6	Cover	1
7	AI-870-7	Threaded Rod M10 x 1.5 x 7.0" Long (Stainless Steel)	1
8	M10-NUT-SS	Hex Nut - M10 x 1.5mm - Stainless Steel	3
9	M10-FW	Flat Washer - M10	1
10	1.25" NPT-BRB	Barbed Fitting - 1-1/4" NPT x 1-1/2" Hose Barb	2
11	AI-870-8A	1/4" NPT Plug, Socket Head Brass	1
12	AI-870-9A	1-1/4" NPT Plug, Socket Head Brass	1

**PROPRIETARY AND CONFIDENTIAL**  
 THE INFORMATION CONTAINED IN THIS DRAWING IS THE SOLE PROPERTY OF FRUITLAND MANUFACTURING. ANY REPRODUCTION IN PART OR AS A WHOLE WITHOUT THE WRITTEN PERMISSION OF FRUITLAND MFG. IS PROHIBITED.

NAME	DATE	 324 Leaside Avenue Stoney Creek, Ontario, CANADA L8E 2N7 Phone: (905) 662-6552 Fax: (905) 662 9875	
CREATED	Z.D. 12/09/2015		
CHECKED		TITLE:	
UNLESS OTHERWISE SPECIFIED: DIMENSIONS ARE IN INCHES TOLERANCES: FRACTIONAL OR .X = ±.015 .XX = ±.010 .XXX = ±.005		AIR INJECTION VALVE (FOR 870 PUMP)	
MATERIAL	--	DWG. NO.	REV
		RF870-AI	1
		SCALE: 1:1	WEIGHT:--

5

4

3

2

1