


CUSTOMER COPY

PART# EEB-05L1-3R1L-575

OLD PART# ELIM E500LUF
 PROPRIETARY AND CONFIDENTIAL
 THE INFORMATION CONTAINED IN THIS DRAWING IS THE SOLE PROPERTY OF FRUITLAND MANUFACTURING. ANY REPRODUCTION IN PART OR AS A WHOLE WITHOUT THE WRITTEN PERMISSION OF FRUITLAND MFG. IS PROHIBITED.

	NAME	DATE	 324 Leaside Avenue Stoney Creek, Ontario, CANADA L8E 2N7 Phone: (905) 662-6552 Fax: (905) 662-9875
CREATED	Z.D.	11/04/2017	
CHECKED			TITLE:
UNLESS OTHERWISE SPECIFIED: DIMENSIONS ARE IN INCHES TOLERANCES: FRACTIONAL OR .X = ±.015 .XX = ±.010 .XXX = ±.005			EEB-05L1-3R1L-575 ASSEMBLY
MATERIAL			DWG. NO.
--			EEB-05L1-3R1L-575
			REV
			P4
			SCALE: 1:16
			WEIGHT:--

REV P4, BOM UPDATED WITH NEW NOMENCLATURE, _____ 03/12/2024, I.P.
 REV P3, UPDATED DRAWING, _____ 12/04/2017, Z.D.
 REV P2, DESIGN CHANGED (FRAME ASSEMBLY, 90° FLANGED ELBOW), 11/15/2017, Z.D.

5

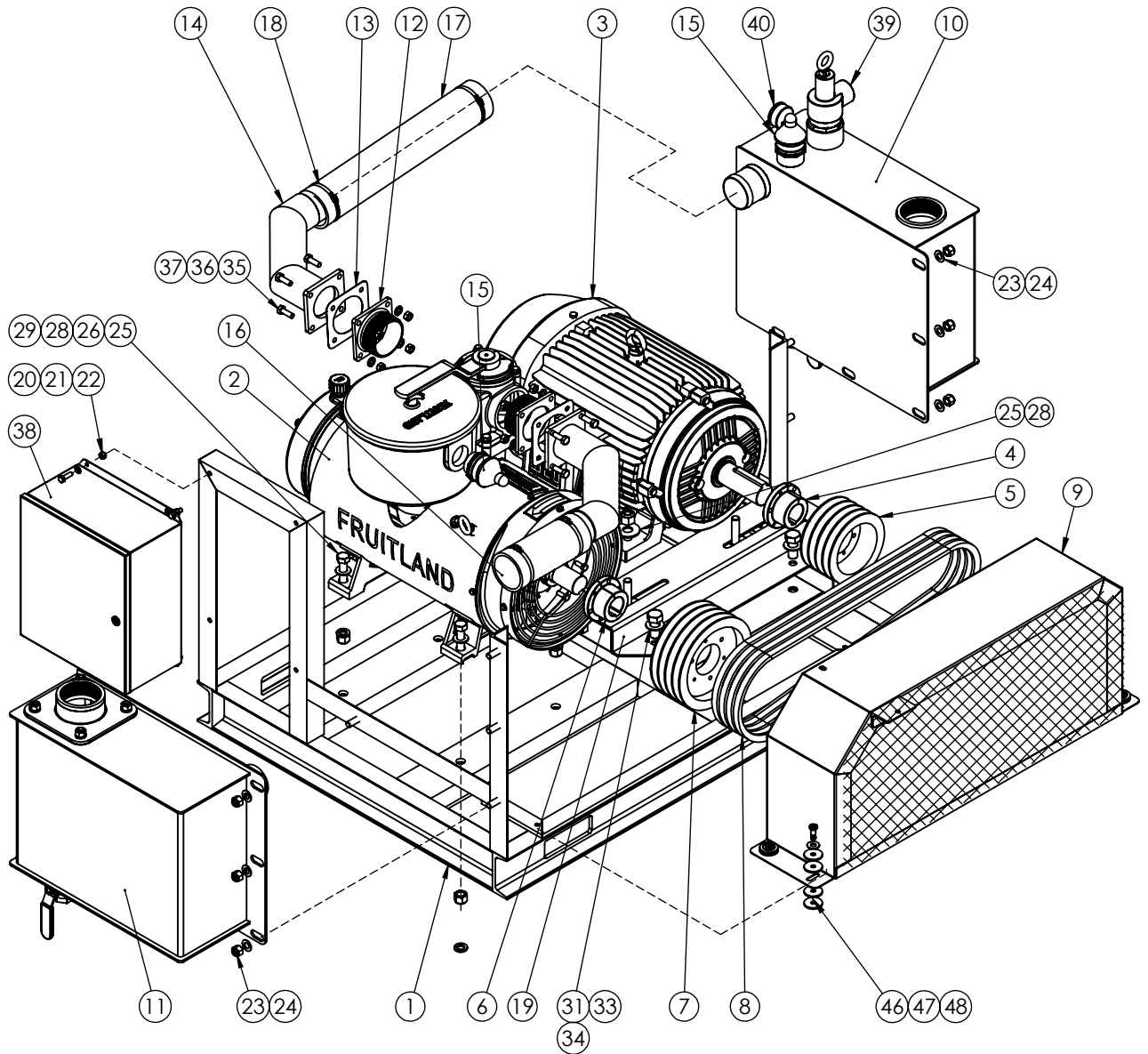
4

3

2

1


ITEM	PART #	DESCRIPTION	QTY.
1	EE-13-01C	ELIM E BASE ASSEMBLY (DWG.# EE-13-01)	1
2	500LUF	500LUF VACUUM PUMP (CCW)	1
3	EE-13-A1-575	575V ELECTRIC MOTOR 40HP, 324T	1
4	EE-13-A3	SK 2.125", 1/2 KEY QD BUSHING	1
5	RF500-38	6" SHEAVE 4 GROOVE B SECT.	1
6	SK42	TAPER PUMP BUSHING - 42mm BORE	1
7	EE-13-A4-8	SHEAVE 8" SK, 4 GR. B SECT.	1
8	EE-13-A5	B65 V-BELT	4
9	EDH-500-02	BELT GUARD (ELIM D500)	1
10	RF500-S09L	S09 SECONDARY SHUT-OFF - LH	1
11	RF500-M09R	M09 MUFFLER ASSEMBLY - RH	1
12	FA-3NTP-M	3" NPT THREADED FLANGE (DWG.# FA-3NTP-M)	2
13	RF500-57	DIVERTER VALVE FLANGE GASKET	2
14	EE-13-06	90° FLANGED ELBOW (DWG.# EE-13-05)	2
15	VB	VACUUM RELIEF VALVE - 1-1/2" NPT	1
16	TFMJ-15-04	RUBBER HOSE - Ø3" x 7" LONG	1
17	FAM09-03-19	RUBBER HOSE - Ø3" x 18.75" LONG	1
18	HCM-080-091	HOSE CLAMP, 3" (86mm - 91mm)	4
19	EE-13-A2	MOTOR SLIDE BASE KIT (MTA-BASE-W324T)	1
38	EE-13-02	CONTROL PANEL C/W COMPONENTS	1
39	PRV-2	PRESSURE RELIEF VALVE - 2" NPT	1
40	FGC-021-PV	COMPOUND GAUGE - 1/4" NPT - 30"VAC-30PSI	1
FASTENER			
20	HWI-500-32	FLAT WASHER - 5/16" - Y.Z.P.	4
21	HBI-310-101	HEX BOLT - 5/16"-18 NC x 1" LONG - Y.Z.P.	4
22	HNI-310-N2	NYLOCK HEX NUT - 5/16"-18 NC - Y.Z.P.	4
23	HWI-500-32	FLAT WASHER, SAE (SMALL) - 1/2" - Y.Z.P.	8
24	HNI-500-N2	NYLOCK HEX NUT - 1/2"-13 NC - Y.Z.P.	8
25	HWI-620-42	FLAT WASHER, USS (LARGE) - 5/8" - Y.Z.P.	8
26	HWI-620-32	FLAT WASHER, SAE (SMALL) - 5/8" - Y.Z.P.	8
28	HNI-620-N2	NYLOCK HEX NUT - 5/8"-11 NC - Y.Z.P.	8
29	HBI-620-252	HEX BOLT - 5/8"-11 NC x 2-1/2" LONG - Y.Z.P.	4
31	HWI-750-02	FLAT WASHER - 3/4" - Y.Z.P.	8
33	HNI-750-N2	NYLOCK HEX NUT - 3/4"-10 NC - Y.Z.P.	4
34	HBI-750-152	HEX BOLT - 3/4"-10 NC x 1-1/2" LONG - Y.Z.P.	4
35	HBM-100-301	HEX BOLT - M10 x 1.5mm x 30mm LONG - Z.P.	8
36	HWM-100-21	LOCK WASHER - M10 - Z.P.	8
37	HNM-100-H1	HEX NUT - M10 x 1.5mm - Z.P.	8
46	HBI-310-623-380	SHOULDER BOLT - Ø3/8" x 1" LG W/ 5/16"-18 NC	4
47	HWI-380-42	FLAT WASHER, USS (LARGE) - 3/8" - Y.Z.P.	4
48	ED-16-03	RUBBER WASHER FOR ED FRAME	16



PART# EEB-05L1-3R1L-575

REV P4, BOM UPDATED WITH NEW NOMENCLATURE, _____ 03/12/2024, I.P.
 REV P3, UPDATED DRAWING, _____ 12/04/2017, Z.D.
 REV P2, DESIGN CHANGED (FRAME ASSEMBLY, 90°FLANGEDELBOW), 11/15/2017, Z.D.

OLD PART# ELIM E500LUF
PROPRIETARY AND CONFIDENTIAL
 THE INFORMATION CONTAINED IN THIS DRAWING IS THE SOLE PROPERTY OF FRUITLAND MANUFACTURING. ANY REPRODUCTION IN PART OR AS A WHOLE WITHOUT THE WRITTEN PERMISSION OF FRUITLAND MFG. IS PROHIBITED.

NAME	DATE	 <small>324 Leaside Avenue Stoney Creek, Ontario, CANADA L8E 2N7 Phone: (905) 662-6552 Fax: (905) 662 9875</small>	
CREATED	Z.D.	11/04/2017	
CHECKED			TITLE: EEB-05L1-3R1L-575 BOM
UNLESS OTHERWISE SPECIFIED: DIMENSIONS ARE IN INCHES TOLERANCES: FRACTIONAL OR .X = ±.015 .XX = ±.010 .XXX = ±.005		DWG. NO. EEB-05L1-3R1L-575 BOM	REV P4
MATERIAL	--	SCALE: 1:14	WEIGHT:--