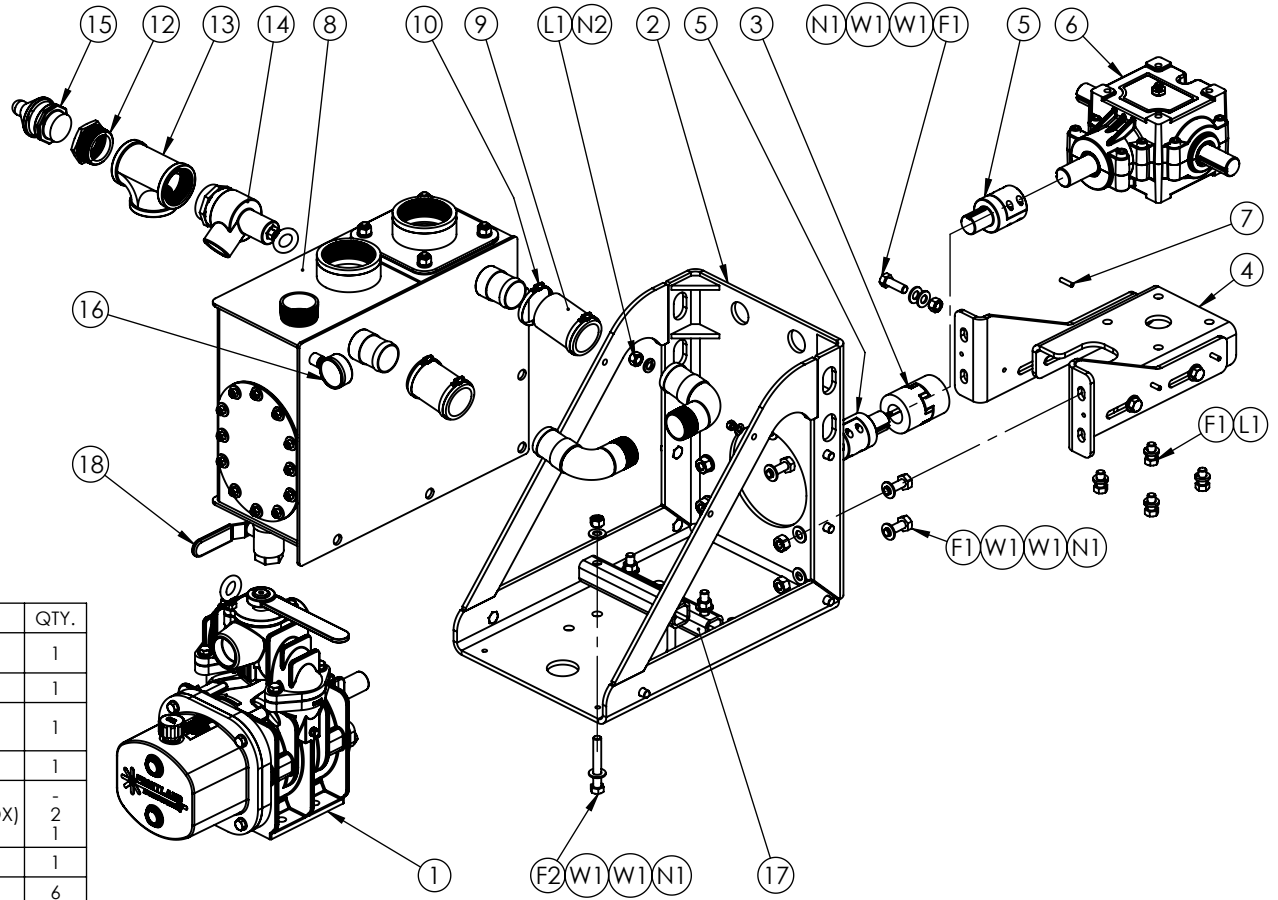
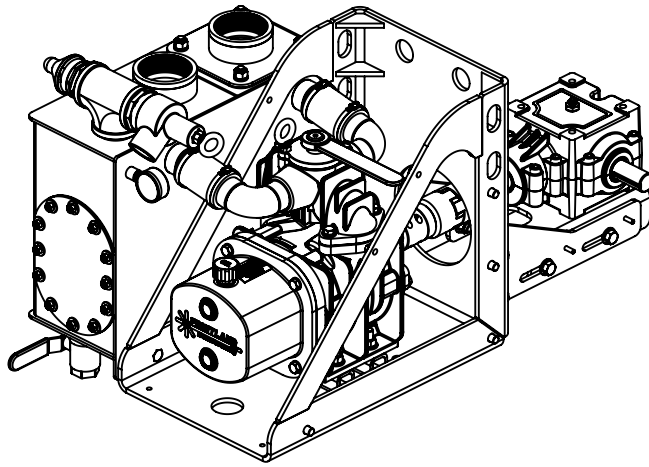



**PART # ELIM A172-PT-L**



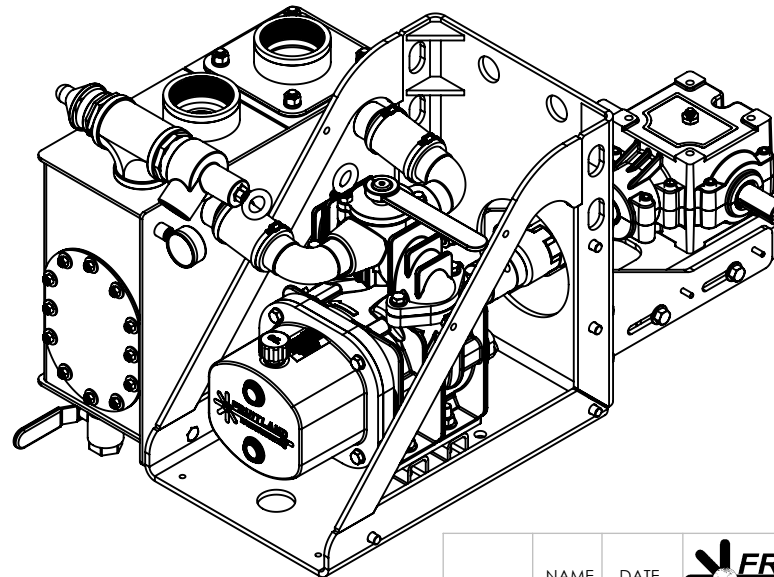
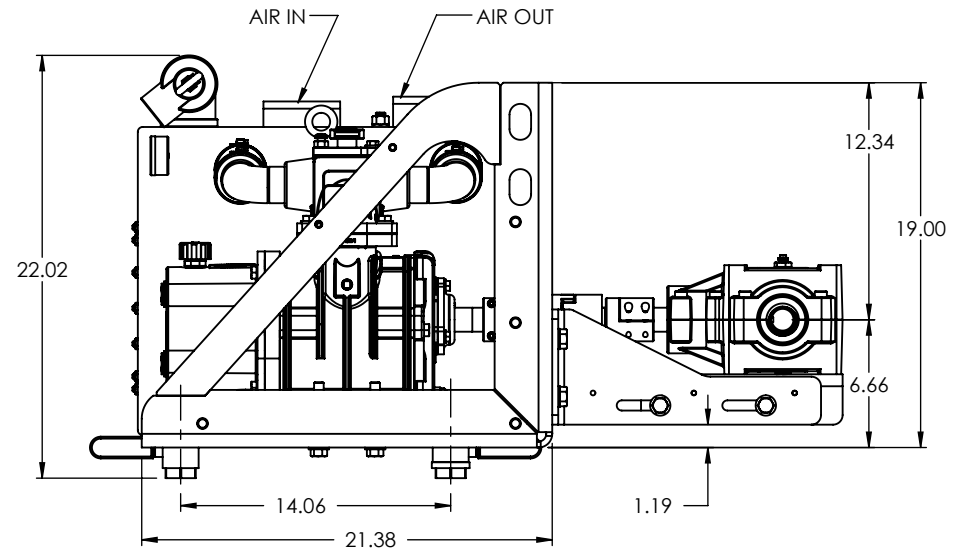
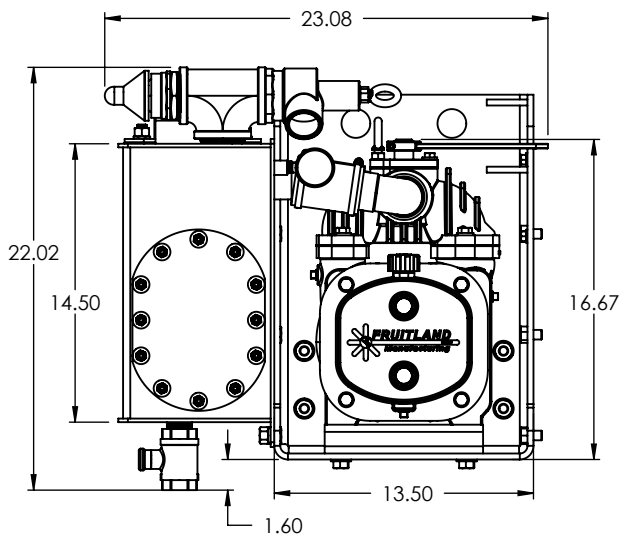
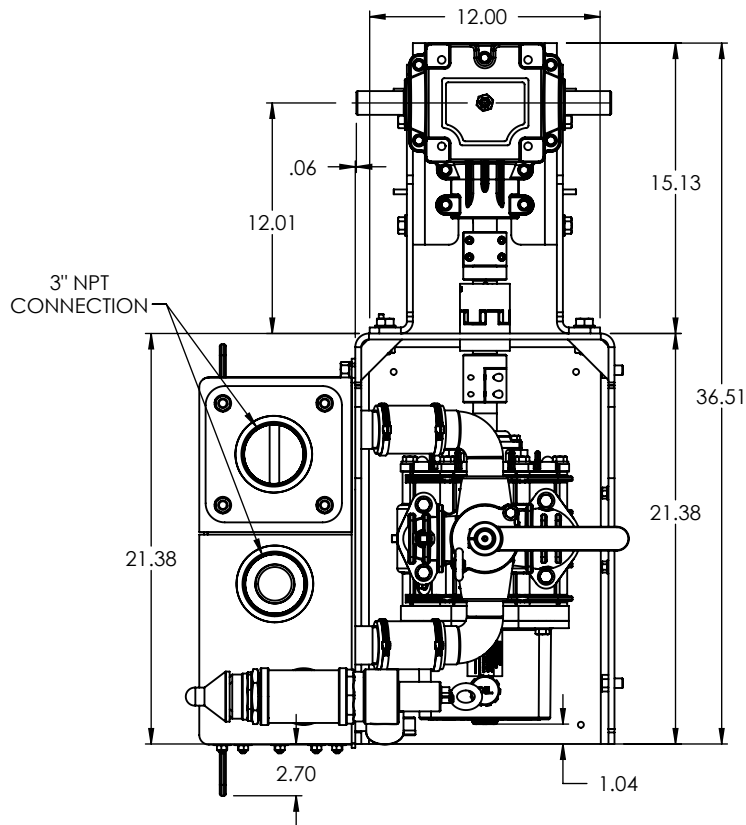
ITEM #	PART #	DESCRIPTION	QTY.
1	172RU	RCF172 VACCUUM PUMP	1
2	PF18-PT-L	344-PT PEDASTAL FRAME-LEFT	1
3	F100-A	F100 COMPLETE COUPLING WITH BUNA INSERT BORES: 1.25 X 1.25 PUMP AND GB	1
4	ADM18	344-PT ANGLE DRIVE MOUNT	1
5	RF250-SA	1-1/2" DIA. SHAFT EXTENSION ADAPTOR 2 PCS. USED WITH 12" SHAFT DISTANCE (GEAR BOX) 1 PC. USED WITH 8" SHAFT DISTANCE (GEAR BOX)	2
6	RF500-GB400	RIGHT ANGLE GEAR BOX	1
7	1/4" X 1" LG SPLIT PIN	1/4" X 1" SPLIT PIN	6
8	SM12-250C-PT-L	250-PT-LEFT SECONDARY MUFFLER ASSM	1
9	2" HOSE	Ø2" RUBBER HOSE 4" LG.	2
10	2" HOSECLAMP	CLAMPS FOR RUBBER HOSE (M10 64-67mm)	4
11	FA250C	DIVERTER ELBOW DWG# SM12-FA	2
12	RF250-75A	Ø2" MALE X Ø1.5" FEMALE, HEX BUSHING	1
13	RF250-76A	Ø2" NPT TEE	1
14	2" PRV	PRESSURE RELIEF VALVE 2" NPT	1
15	VB	VACCUUM RELIEF VALVE 1-1/2" NPT	1
16	PVG-2.5	PRESSURE VACCUUM GAGE	1
17	Elim A344-PT-SB-T	SPACER TUBE FOR HOUSING (ELIM A344-PT)	2
18	M09-A-07	1" NPT BALL VALVE	2
F1	1/2" X 1-1/2"	1/2" NC 1.5" LONG ZINC PLATED HEX HEAD BOLTS	12
F2	1/2" X 3-1/2"	1/2" NC 3.5" LONG ZINC PLATED HEX HEAD BOLTS	4
W1	1/2" FLAT WASHER	1/2" Z.P. FLAT WASHER	16
L1	1/2" L/W	1/2" LOCK WASHERS ZINC PLATED	4
N1		1/2" NC NYLOCK HEX NUT	8
N2	1/2" NUTS	1/2" NC ZINC PLATED HEX NUT	4

SEE DWG# SM12-250C-PT-L  
FOR  
250-PT-LEFT SECONDARY MUFFLER BOM


**PROPRIETARY AND CONFIDENTIAL**  
THE INFORMATION CONTAINED IN THIS DRAWING IS THE SOLE PROPERTY OF FRUITLAND MANUFACTURING. ANY REPRODUCTION IN PART OR AS A WHOLE WITHOUT THE WRITTEN PERMISSION OF FRUITLAND MFG. IS PROHIBITED.

	NAME	DATE		324 Leaside Avenue Stoney Creek, Ontario, CANADA L8E 2N7 Phone: (905) 662-6552 Fax: (905) 662-5412	
CREATED	Z.D.	07/23/2019			
CHECKED	K.A.	07/23/2019	TITLE:	ELIM A172-PT-LEFT BOM ANGLE GEAR BOX	
UNLESS OTHERWISE SPECIFIED: DIMENSIONS ARE IN INCHES TOLERANCES: FRACTIONAL OR .X = ±.015 .XX = ±.010 .XXX = ±.005			DWG. NO.	ELIM A172-PT-L	
MATERIAL	--	SCALE: 1:12	WEIGHT:--	REV	PO

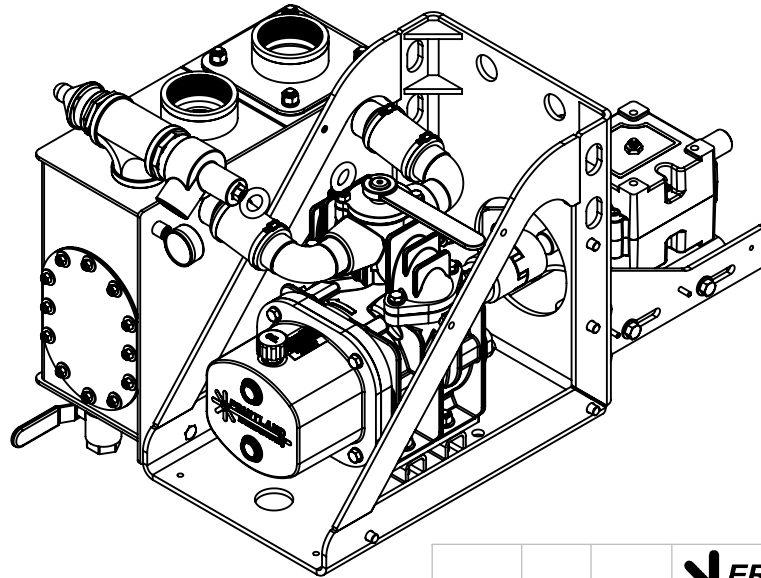
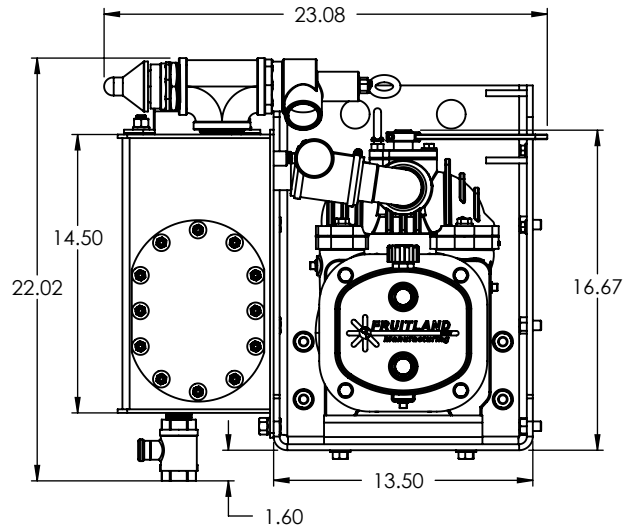
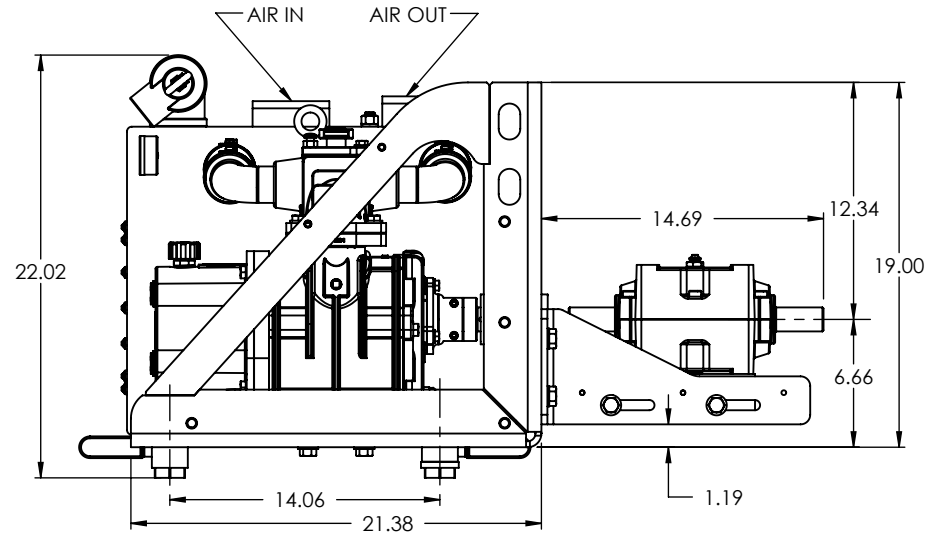
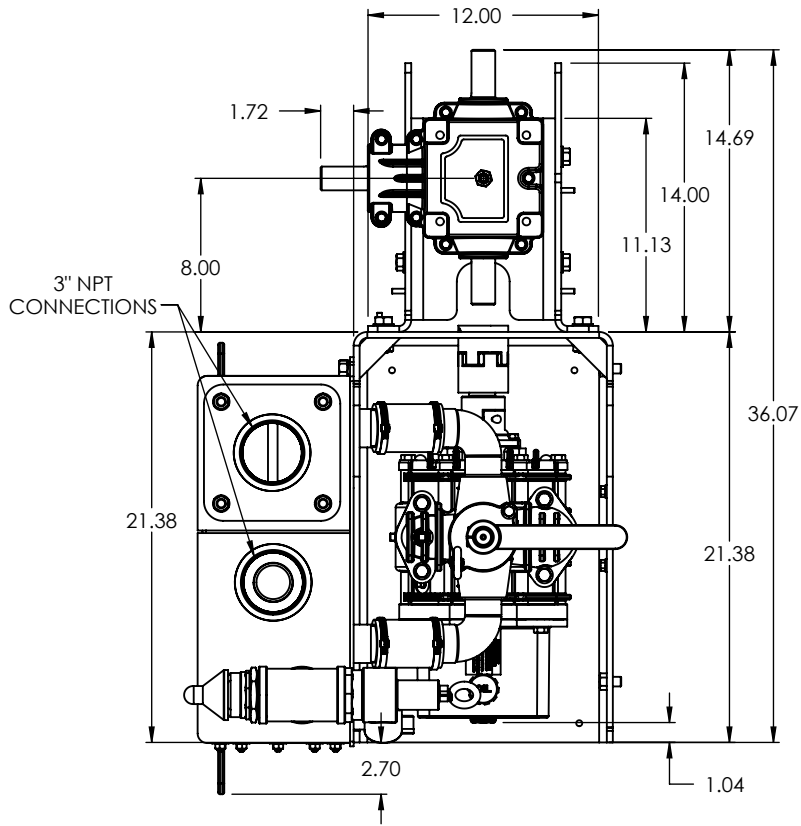
**PART # ELIM A172-PT-L**




**PROPRIETARY AND CONFIDENTIAL**  
 THE INFORMATION CONTAINED IN THIS DRAWING IS THE SOLE PROPERTY OF FRUITLAND MANUFACTURING. ANY REPRODUCTION IN PART OR AS A WHOLE WITHOUT THE WRITTEN PERMISSION OF FRUITLAND MFG. IS PROHIBITED.

	NAME	DATE		324 Leaside Avenue Stoney Creek, Ontario, CANADA L8E 2N7 Phone: (905) 662-6552 Fax: (905) 662 9875	
CREATED	Z.D.	07/23/2019		TITLE:	ELIM A172-PT-LEFT (12") DIMS
CHECKED	K.A.	07/23/2019	DWG. NO.	ELIM A172-DIMS-L	REV PO
UNLESS OTHERWISE SPECIFIED: DIMENSIONS ARE IN INCHES TOLERANCES: FRACTIONAL OR .X = ±.015 .XX = ±.010 .XXX = ±.005			SCALE: 1:10	WEIGHT:--	SHEET 1 OF 2

**PART # ELIM A172-PT-L**



**PROPRIETARY AND CONFIDENTIAL**  
THE INFORMATION CONTAINED IN THIS DRAWING IS THE SOLE PROPERTY OF FRUITLAND MANUFACTURING. ANY REPRODUCTION IN PART OR AS A WHOLE WITHOUT THE WRITTEN PERMISSION OF FRUITLAND MFG. IS PROHIBITED.

NAME	DATE		324 Leaside Avenue Stoney Creek, Ontario, CANADA L8E 2N7 Phone: (905) 662-6552 Fax: (905) 662 9875	
CREATED	Z.D. 07/23/2019		TITLE:	ELIM A172-PT-LEFT (8") DIMS
CHECKED	K.A. 07/23/2019	DWG. NO.	ELIM A172-DIMS-L	REV PO
UNLESS OTHERWISE SPECIFIED: DIMENSIONS ARE IN INCHES TOLERANCES: FRACTIONAL OR .X = ±.015 .XX = ±.010 .XXX = ±.005		SCALE: 1:1	WEIGHT:--	SHEET 2 OF 2