

ITEM #	PART #	DESCRIPTION	QTY.
1	500LUF	500LUF Vacuum Pump	1
2	RF500-SC	Pedastal Frame	1
3	RF500-S09L	S09 Secondary Shut-Off	1
4	M02	M02 Muffler, 3" NPT	1
5	FAM09C	Flange - Muffler Side	1
6	FAS09C	Flange - Secondary Side	2
7	FA-3NPT-M	Diverter Flange - 3" NPT	3
8	HDM09C	Hydraulic Motor Mount	1
9	FAM09-03	Rubber Hose - Ø3" x 13" Long - Muffler Side	1
10	FAS09-03	Rubber Hose - Ø3" x 4.75" Long - Muffler Side	1
11	HCM-091-001	Super Clamp - SCS 86-91	4
12	RF500-57	Gasket - Pump Flange	3
13	PRV-2"	Pressure Relief Valve - 2" NPT	1
14	VB	Vacuum Relief Valve - 1-1/2" NPT	2
15	PVG-2.5	Compound Pressure-Vacuum Gauge - 1/4" NPT	1
16	RF500-240	Pipe Plug - 1-1/2" NPT - Square Head	1
17	TFMJ-15-02	Pipe Muffler Bracket C	1
18	CVSP-3100-1"FM90	90° Street Elbow (MxF), 1" NPT	1
19	M09-A-07	Ball Valve - 1" NPT	1
20	S09-A-14	Ball Valve - 1-1/2" NPT	1
21	F190C-1250	F190 Coupling with 42mm Bore Flange - 1/4" Insert & Key	1

HARDWARE

F1	HBM-100-350	Hex Bolt - M10 x 35mm Long - Z.P.	12
F2	HBI-600-170	Hex Bolt - 5/8"-11 NC x 1-3/4" Long - Z.P.	4
F3	5/8"x2-1/4" HEX HEAD	Hex Bolt - 5/8"-11 NC x 2-1/4" Long - Z.P.	4
F4	5/16"x1"-BOLT	Hex Bolt - 5/16"-18 NC x 1" Long - Z.P.	4
F5	1/2 X 1-1/2	Hex Bolt - 1/2"-13 NC x 1-1/2" Long - Z.P.	2
N1	RF500-137A	Hex Nut - M10 x 1.5mm - Z.P.	12
N2	5/16" NYLOCK NUTS	Nylock Hex Nut - 5/16"-18 NC - Z.P.	4
N3	HNI-500-201	Nylock Hex Nut - 1/2"-13 NC - Z.P.	6
N4	5/8" NUT	Nylock Hex Nut - 5/8"-11 NC - Z.P.	4
W1	5/16" WASHER	Flat Washer - 5/16" - Z.P.	4
W2	1/2" F/W-SAE	Flat Washer, SAE (Small) - 1/2" - Z.P.	6
W3	5/8" F/W-SAE	Flat Washer, SAE (Small) - 5/8" - Z.P.	8
W4	5/8" F/W-USS	Flat Washer, USS (Large) - 5/8" - Z.P.	4
W5	M10-FW	Flat Washer, M10 - Z.P.	12
L1	RF120-94A	Lock Washer - M10 - Z.P.	12
SP1	1/4" X 1" LG SPLIT PIN	Split Pin - 1/4" x 1" Long	2

HYDRAULIC MOTOR & HARDWARE (OPTIONAL)

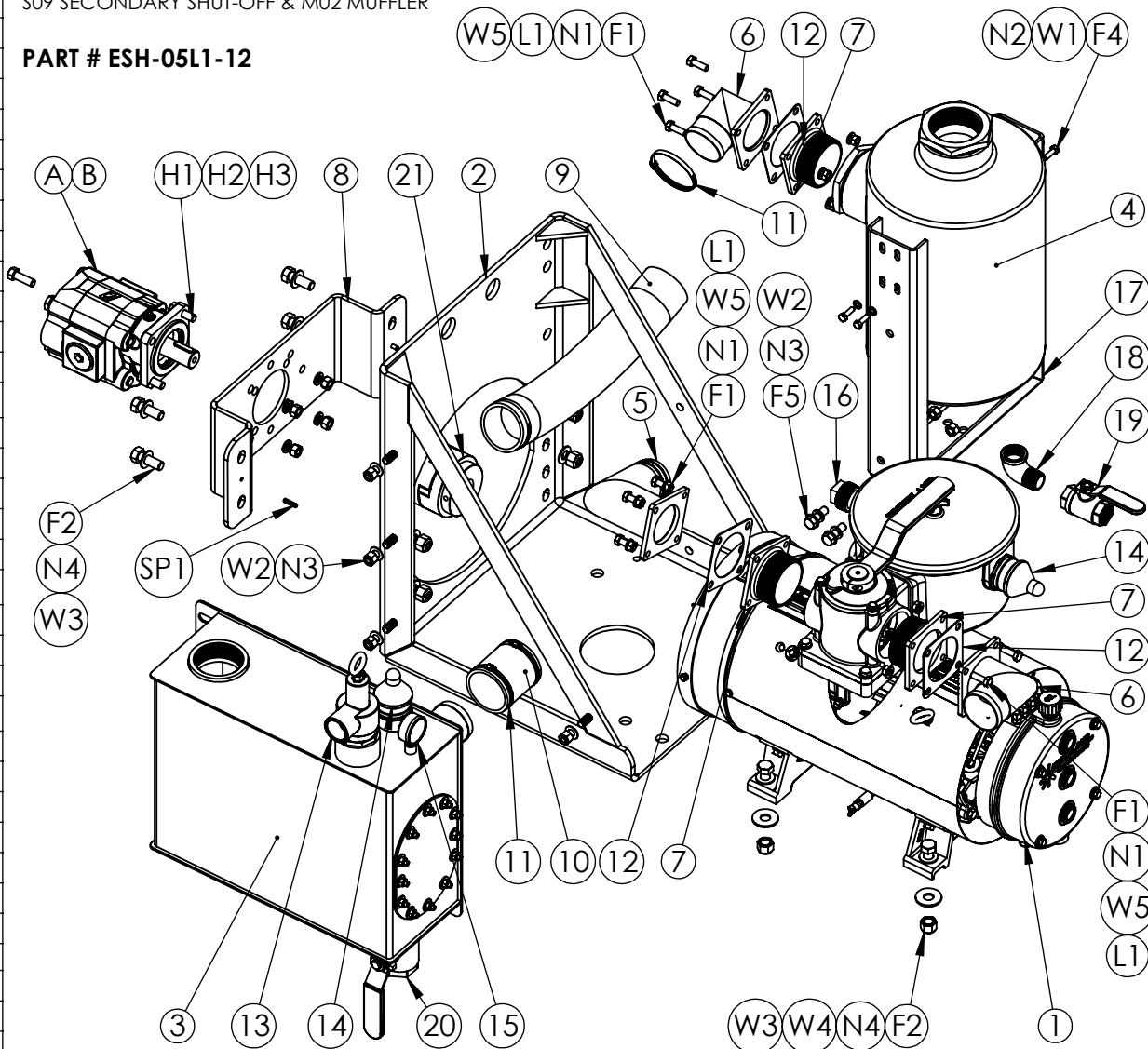
A	P500-HM	Hydraulic Motor	1
B	P500-HMBOS	Hydraulic Motor	1
H1	1/2 X 1-1/2	Hex Bolt - 1/2"-13 NC x 1-1/2" Long - Z.P.	4
H2	1/2" L/W	Lock Washer - 1/2" - Z.P.	4
H3	1/2" NUT	Hex Nut - 1/2"-13 NC - Z.P.	4

ELIM H-SM02 COMPLETE ASSEMBLY

WITH 500LUF PUMP, HYDRAULIC MOTOR MOUNT
S09 SECONDARY SHUT-OFF & M02 MUFFLER

CUSTOMER COPY

PART # ESH-05L1-12




NOTES:

- ALL FASTERS TO BE SUPPLIED
- SEE PAGE 2 FOR HYD. MOTOR DETAILS

PROPRIETARY AND CONFIDENTIAL

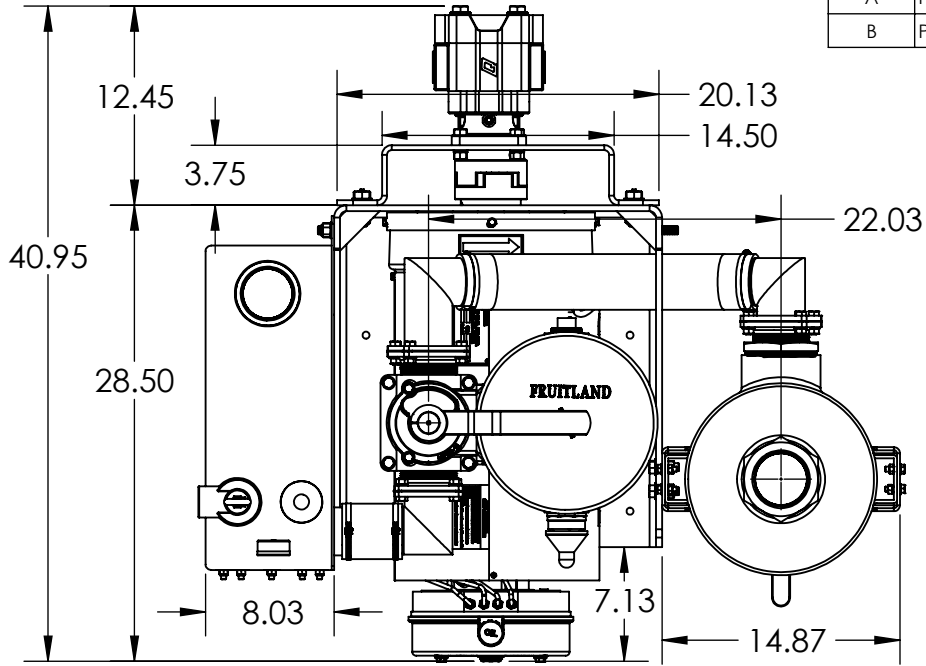
THE INFORMATION CONTAINED IN THIS DRAWING IS THE SOLE PROPERTY OF FRUITLAND MANUFACTURING. ANY REPRODUCTION IN PART OR AS A WHOLE WITHOUT THE WRITTEN PERMISSION OF FRUITLAND MFG. IS PROHIBITED.

NAME	DATE	 <p>324 Leaside Avenue Stoney Creek, Ontario, CANADA L8E 2N7 Phone: (905) 662-6552 Fax: (905) 662 9875</p>
CREATED	I.P. 06/23/2023	
CHECKED		TITLE: ESH-05L1-12 COMPLETE ASSEMBLY - EXPLODE VIEW & BOM
UNLESS OTHERWISE SPECIFIED: DIMENSIONS ARE IN INCHES TOLERANCES: FRACTIONAL OR .X = ±.015 .XX = ±.010 .XXX = ±.005		DWG. NO. ESH-05L1-12
MATERIAL	--	REV 0
SCALE: 1:12		WEIGHT:--
SHEET 1 OF 2		

OLD PART # ELIM H-SM02-500LUF

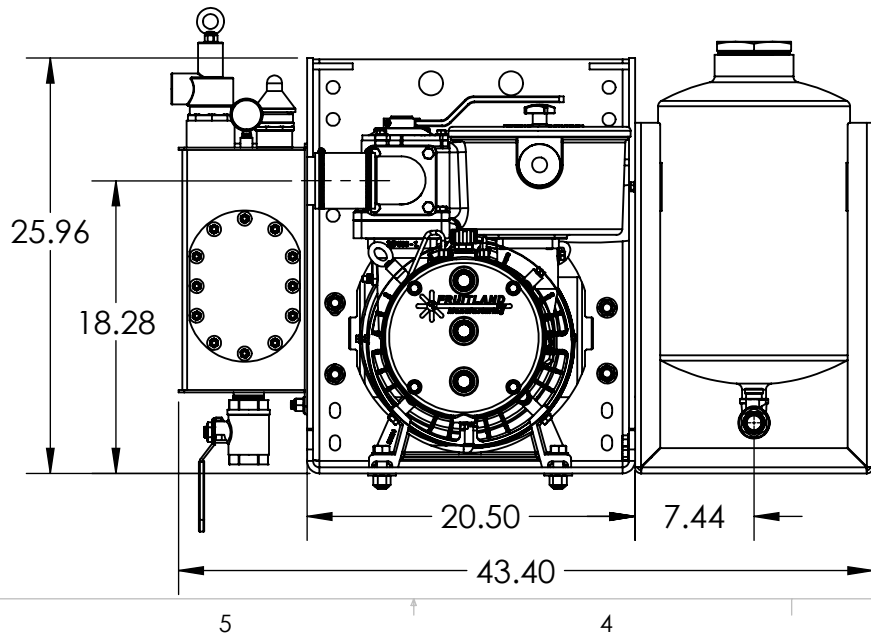
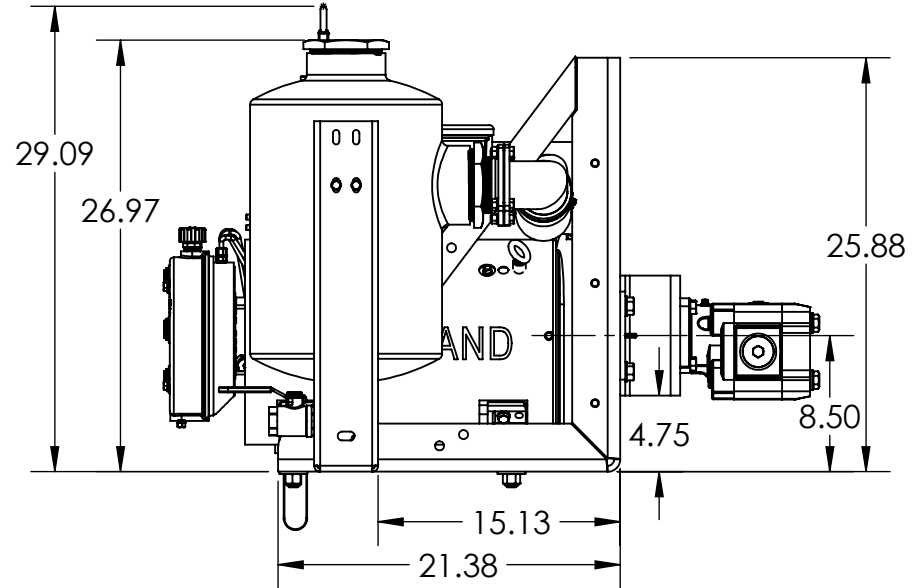
OLD PART # ELIM H-SM02-500LUF

HYDRAULIC MOTOR SPECIFICATIONS								
ITEM #	PART #	DISP. (IN ³)	MAX PRESSURE	MAX RPM	MOUNTING FACE	SHAFT DIA.	KEY SIZE	PORT SIZE (INLET/OUTLET)
A	P500-HM	5.70	3000 PSI	3000	SAE B - 4 BOLT	1.25"	5/16"	1-1/2" NPT
B	P500-HMBOS	5.70	3000 PSI	3000	SAE B - 4 BOLT	1.25"	5/16"	-20 ORB




NOTE: SHOWN WITH 500LUF PUMP
OTHER OPTIONS AVAILABLE

PART # ESH-05L1-12



PROPRIETARY AND CONFIDENTIAL
THE INFORMATION CONTAINED IN THIS DRAWING IS THE SOLE PROPERTY OF FRUITLAND MANUFACTURING. ANY REPRODUCTION IN PART OR AS A WHOLE WITHOUT THE WRITTEN PERMISSION OF FRUITLAND MFG. IS PROHIBITED.

NAME	DATE	 324 Leaside Avenue Stoney Creek, Ontario, CANADA L8E 2N7 Phone: (905) 662-6552 Fax: (905) 662-9875	
CREATED	I.P. 06/23/2023		
CHECKED		TITLE:	
UNLESS OTHERWISE SPECIFIED: DIMENSIONS ARE IN INCHES TOLERANCES: FRACTIONAL OR .X = ±.015 .XX = ±.010 .XXX = ±.005		ESH-05L1-12 COMPLETE ASSEMBLY - DIMS	
MATERIAL	--	DWG. NO.	REV
		ESH-05L1-12	0
		SCALE: 1:12	WEIGHT:--
			SHEET 2 OF 2

5

4

3

2

1