

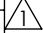

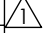
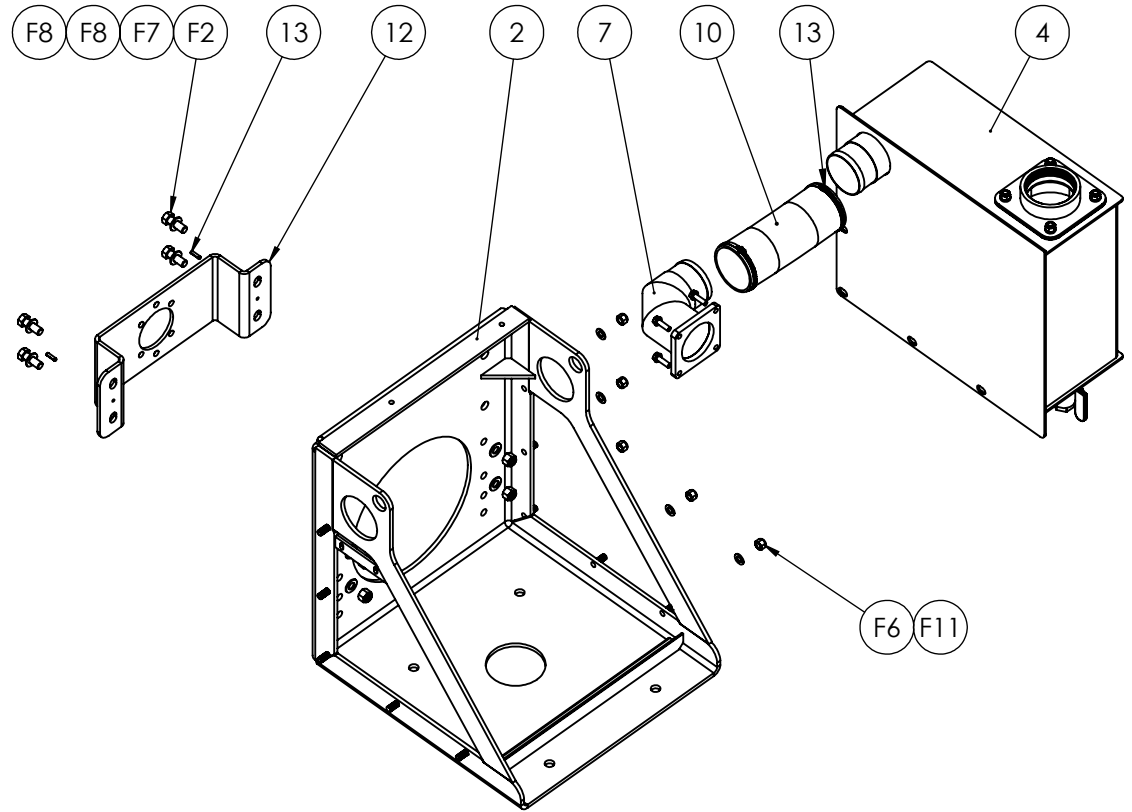


7	PART #	DESCRIPTION	QTY.
2	RF870-SC	Pedestal Frame	1
4	RF870-M14	Muffler	1
7	FL14	4" NPT Elbow Diverter Flange for Elim 870	1
10	ESX-080-412	Rubber Hose - Ø4" x 12" Long - SLR-64	12" 
12	HDM14	Hydraulic Motor Mount	1
13	MKL-121-SP	Hose Clamp Ø4" Tank Hose (Mikalor M8 113-121)	2
15	RF870-65	Gasket - Diverter Flange for 870 Pumps	1
Hex Bolts			
F1	RF500-67A	Hex Bolt - M10x1.5x30mm Long - Z.P.	4
F2	HBI-600-170	Hex Bolt - 5/8"-11 NC x 1-3/4" Long - Z.P.	4 
Hex Nuts			
F6	HNI-500-201	Nylock Hex Nuts - 1/2"-13 NC - Z.P.	5
F7	5/8" NUT	Nylock Hex Nuts - 5/8"-11 NC - Z.P.	4 
Washers			
F8	5/8" F/W-SAE	Flat Washer, SAE (Small) - 5/8" - Z.P.	8 
F10	RF120-94A	Lock Washer - 10mm - Z.P.	4
F11	1/2" F/W-SAE	Flat Washer, SAE (Small) - 1/2" - Z.P.	5 
Spring Pins			
F13	1/4" X 1" LG SPLIT PIN	1/4" x 1" LG Split Pin	2




ELIMINATOR H PACKAGE
FOR 870 PUMPS
WITH HYDRAULIC MOTOR MOUNT,
AND MUFFLER

PART # ELIM870-H-M

NOTES:
1. ALL FASTENERS TO BE SUPPLIED.
2. WEIGHT AS SHOWN: 266 LBS

CUSTOMER COPY

	NAME	DATE	 324 Leaside Avenue Stoney Creek, Ontario, CANADA L8E 2N7 Phone: (905) 662-6552 Fax: (905) 662-9875
CREATED	Z.D.	03/26/2015	
CHECKED	K.A.	03/26/2015	TITLE:
			ELIM870-H-M BOM
UNLESS OTHERWISE SPECIFIED: DIMENSIONS ARE IN INCHES TOLERANCES: FRACTIONAL OR .X = ±.015 .XX = ±.010 .XXX = ±.005			DWG. NO.
			ELIM870-H-M
MATERIAL			SCALE: 1:12
			WEIGHT:--
			REV
			1

PROPRIETARY AND CONFIDENTIAL
THE INFORMATION CONTAINED IN THIS
DRAWING IS THE SOLE PROPERTY OF
FRUITLAND MANUFACTURING. ANY
REPRODUCTION IN PART OR AS A
WHOLE WITHOUT THE WRITTEN
PERMISSION OF FRUITLAND MFG. IS
PROHIBITED.