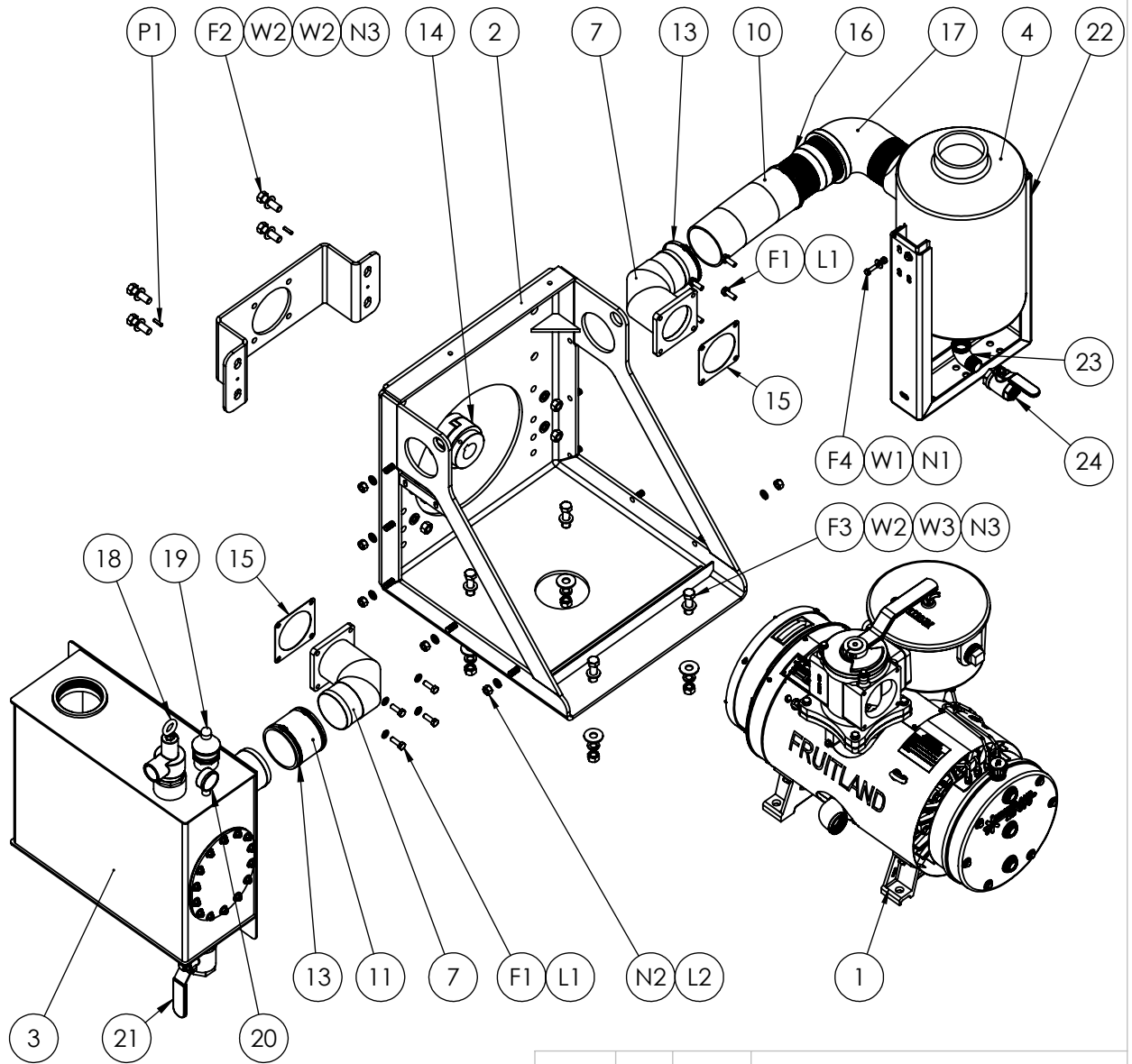


ITEM #	PART #	DESCRIPTION	QTY.
1	870LUF	Vacuum Pump	1
2	RF870-SC	Pedestal Frame	1
3	RF870-S14	Secondary Shut-Off	1
4	M02-4	M02 Muffler - 4" NPT	1
7	FL14	ELIM 870 4" Flange	2
10	ESX-080-412	Rubber Hose - Ø4" x 12" Long	1
11	ESX-080-404	Rubber Hose - Ø4" x 4-3/8" Long	1
12	HDM14-FC	Hydraulic Motor Mount - C-Face	1
13	MKL-121-SP	Hose Clamp Ø4" Tank Hose (Mikalor M8 113-121)	4
14		Customer To Specify Coupling Size	1
15	RF870-65	Diverter Gasket for RCF 870	2
16	4"NPT BARB	4" Hose Barb to NPT Nipple Fitting	1
17	4"90SE	90° Street Elbow (MxF) - 4" NPT	1
18	PRV-2"	Pressure Relief Valve - 2" NPT	1
19	VB	Vacuum Relief Valve - 1-1/2" NPT	1
20	PVG-2.5	Compound Gauge 2.5" 30"VAC-30PSI	1
21	S09-A-14	Ball Valve - 1-1/2" NPT	1
22	TFMJ-870-02	TFMJ Muffler Bracket for 870 Custom	1
23	CVSP-3100-1"FM90	90° Street Elbow (MxF) - 1" NPT - Black	1
24	M09-A-07	Ball Valve - 1" NPT	1
Hex Bolts			
F1	RF500-67A	Hex Bolt - M10x1.5x30mm - Z.P.	8
F2	HBI-620-201	Hex Bolt - 5/8" NC x 2" Long - Z.P.	4
F3	5/8"X2-1/4" HEX HEAD	Hex Bolt - 5/8" NC x 2-1/4" Long - Z.P.	4
F4	5/16X1-BOLT	Hex Bolt - 5/16" NC x 1" Long - Z.P.	4
Hex Nuts			
N1	5/16" Nylock Nuts	Nylock Hex Nut - 5/16" NC	4
N2	1/2" NUT	Hex Nut - 1/2" NC - Z.P.	7
N3	5/8" NUT	Nylock Hex Nut - 5/8" NC	8
Flat Washers			
W1	HWF-310-000-ZP	Flat Washer - 5/16" - Z.P.	4
W2	5/8" F/W-SAE	Flat Washer, SAE (Small) - 5/8" - Z.P.	12
W3	5/8" F/W-USS	Flat Washer, USS (Large) - 5/8" - Z.P.	4
Lock Washers			
L1	RF120-94A	Lock Washer - 10mm	8
L2	1/2" L/W	Lock Washer - 1/2"	7
Spring Pins			
P1	1/4" X 1" LG SPLIT PIN	Split Pin - 1/4" x 1" LG	2

CUSTOMER COPY


NOTES:

1. DRIVE COUPLINGS TO BE CUSTOMER SPECIFIED.
2. ALL FASTENERS TO BE SUPPLIED.

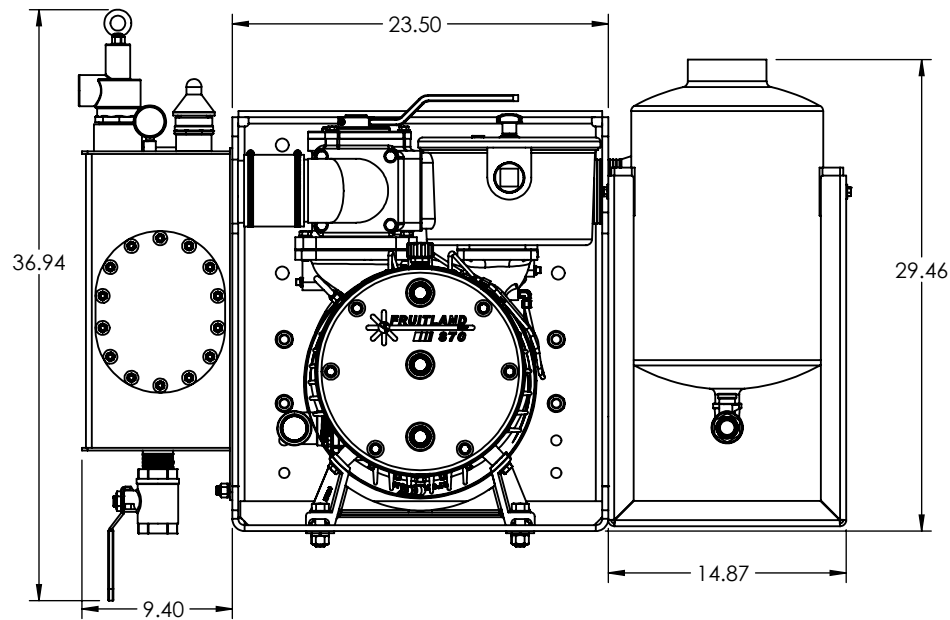
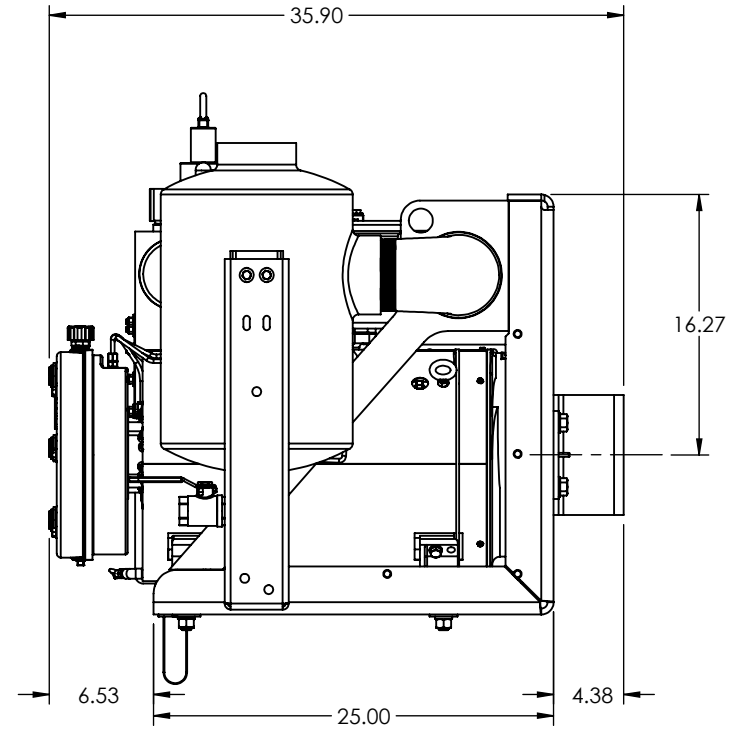
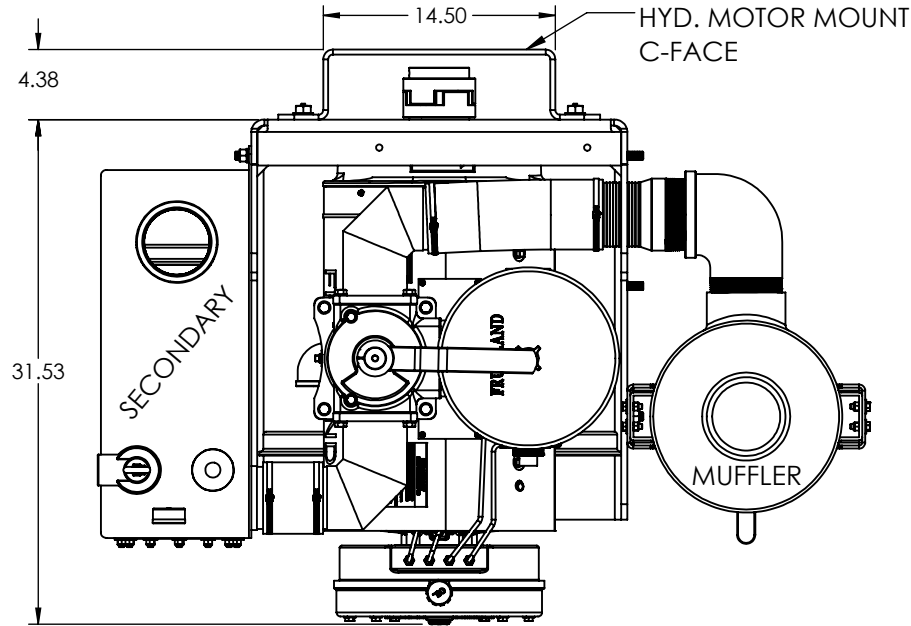


PART # ELIM H-SM02-870LUF

PROPRIETARY AND CONFIDENTIAL
 THE INFORMATION CONTAINED IN THIS DRAWING IS THE SOLE PROPERTY OF FRUITLAND MANUFACTURING. ANY REPRODUCTION IN PART OR AS A WHOLE WITHOUT THE WRITTEN PERMISSION OF FRUITLAND MFG. IS PROHIBITED.


NAME	DATE	 <small>324 Leaside Avenue Stoney Creek, Ontario, CANADA L8E 2N7 Phone: (905) 662-6552 Fax: (905) 662-9875</small>	
CREATED	I.P.	12/21/2022	TITLE: ELIM H-SM02-870LUF BOM C-Face Hydraulic Drive
CHECKED	K.A.	12/21/2022	
UNLESS OTHERWISE SPECIFIED: DIMENSIONS ARE IN INCHES TOLERANCES: FRACTIONAL OR .X = ±.015 .XX = ±.010 .XXX = ±.005		DWG. NO. ELIM H-SM02-870LUF	REV PO
MATERIAL	--	SCALE: 1:12	WEIGHT:-- SHEET 1 OF 2

NOTE: SHOWN WITH RF870LUF PUMP
OTHER OPTIONS AVAILABLE



PART # ELIM H-SM02-870LUF

CUSTOMER COPY

	NAME	DATE	 <small>324 Leaside Avenue Stoney Creek, Ontario, CANADA L8E 2N7 Phone: (905) 662-6552 Fax: (905) 662-9875</small>
CREATED	I.P.	12/21/2022	
CHECKED	K.A.	12/21/2022	TITLE:
UNLESS OTHERWISE SPECIFIED: DIMENSIONS ARE IN INCHES TOLERANCES: FRACTIONAL OR .X = ±.015 .XX = ±.010 .XXX = ±.005			ELIM H-SM02-870LUF DIMS C-Face Hydraulic Drive
MATERIAL	--	SCALE: 1:12	DWG. NO.
		WEIGHT:--	ELIM H-SM02-870LUF
		SHEET 2 OF 2	REV
			PO

PROPRIETARY AND CONFIDENTIAL
THE INFORMATION CONTAINED IN THIS DRAWING IS THE SOLE PROPERTY OF **FRUITLAND MANUFACTURING**. ANY REPRODUCTION IN PART OR AS A WHOLE WITHOUT THE WRITTEN PERMISSION OF FRUITLAND MFG. IS PROHIBITED.