

HYDRAULIC MOTOR SPECIFICATIONS								
ITEM #	HYDRAULIC MOTOR PART #	DISP. (IN ³)	MAX PRESSURE	MAX RPM	MOUNTING FACE	SHAFT DIA.	KEY SIZE	PORT SIZE (INLET / OUTLET)
A	P500-HM	5.70	3000 PSI	3000	SAE B - 4 BOLT	1.25"	5/16"	1-1/2" NPT
B	P500-HMBOS	5.70	3000 PSI	3000	SAE B - 4 BOLT	1.25"	5/16"	-20 ORB
C	P500-HMBOS-C	5.70	3000 PSI	3000	SAE C - 4 BOLT	1.25"	5/16"	-20 ORB

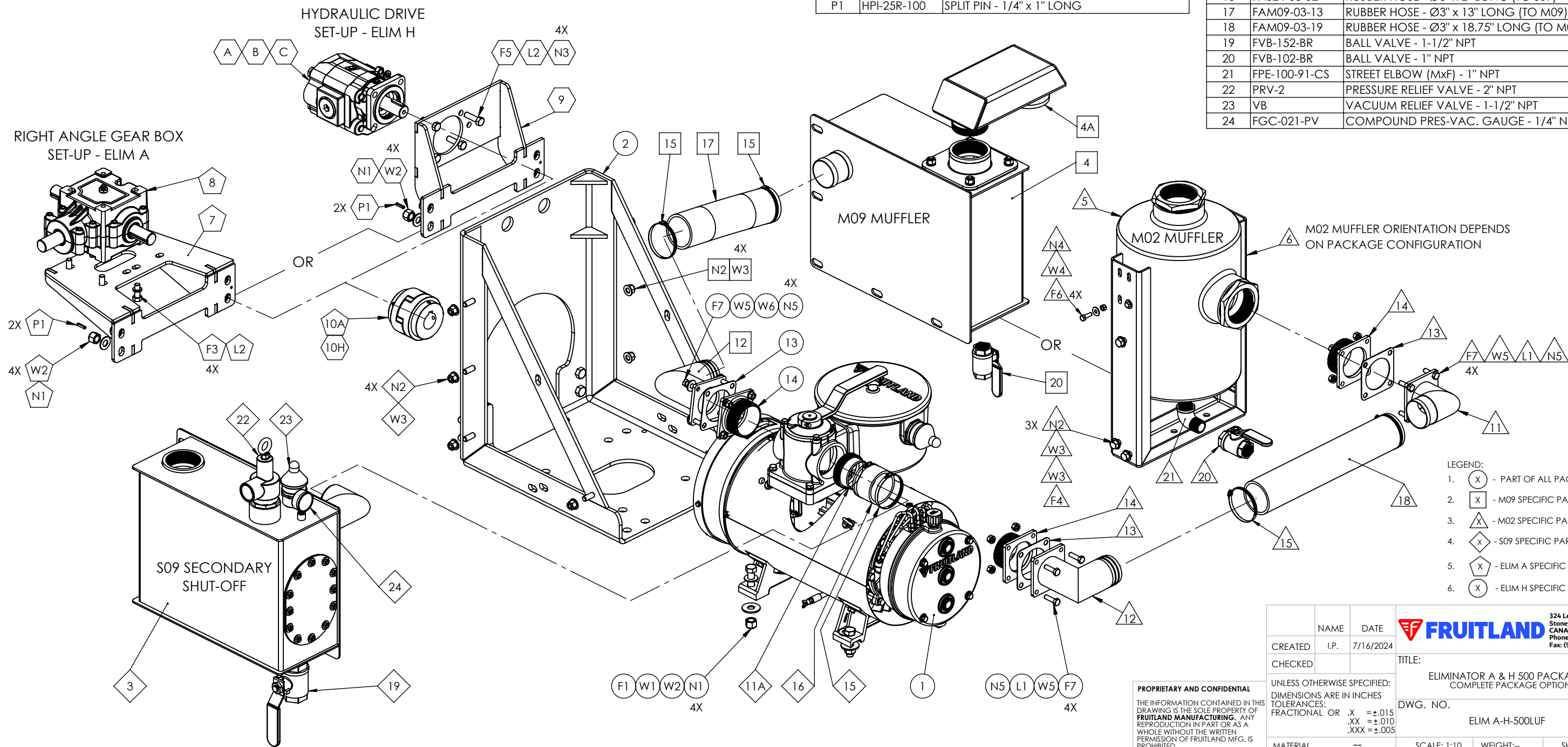
NOTES:

- ALL FASTENERS TO BE SUPPLIED
- SEE INDIVIDUAL PACKAGE DRAWINGS FOR COMPLETE BOM & DIMS
- ELBOW FLANGES & HOSE LENGTHS DEPEND ON PACKAGE STYLE
- FOR HYD. PACKAGES, SPECIFY COUPLING SIZE
- HARDWARE QUANTITIES DEPEND ON PACKAGE CONFIGURATION
- LH & RH CONFIGURATIONS OF MUFFLERS & SECONDARY AVAILABLE

FRUITLAND ELIMINATOR A & H PACKAGE FOR 500LUF PUMPS - COMPLETE PACKAGE OPTIONS

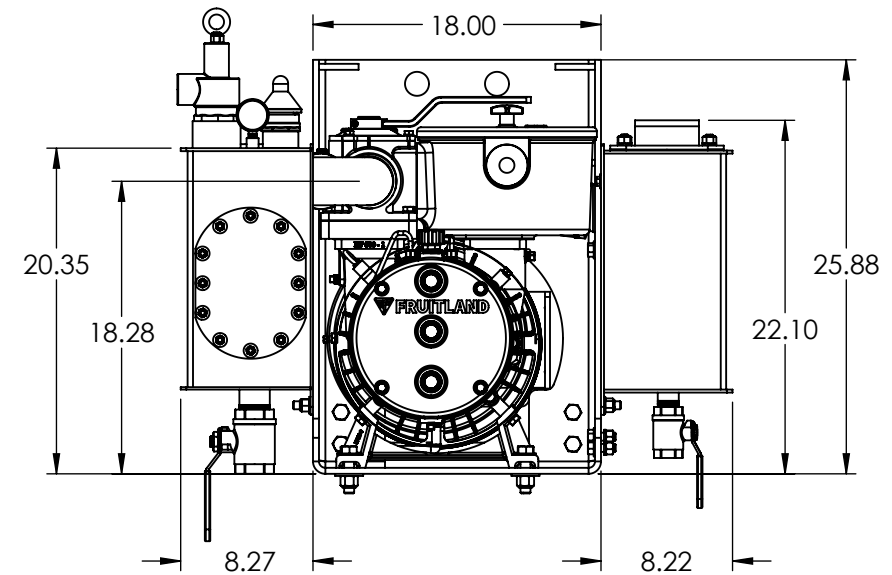
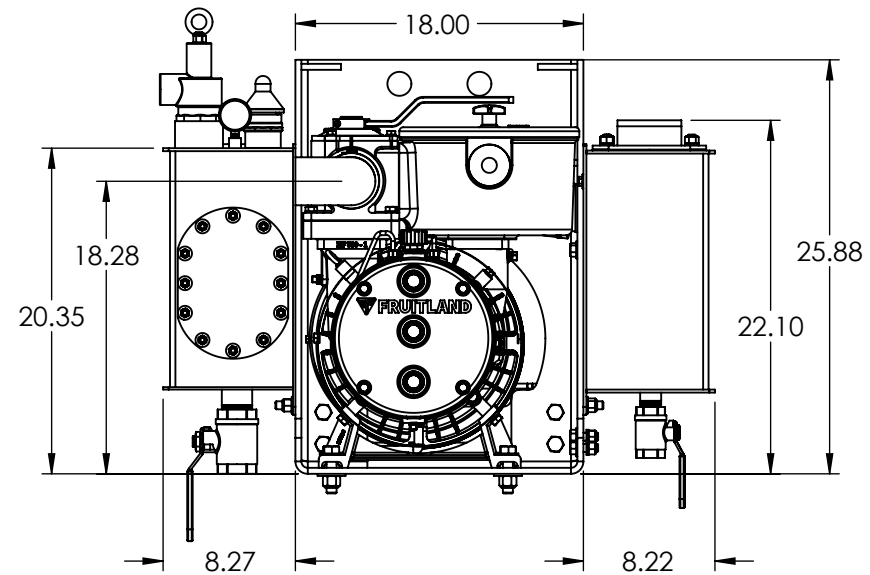
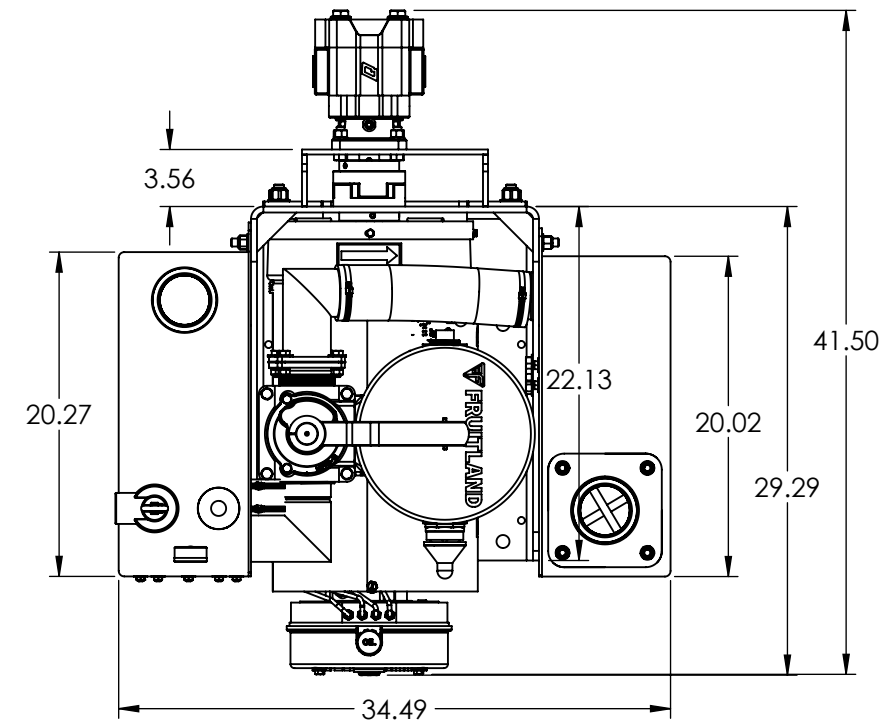
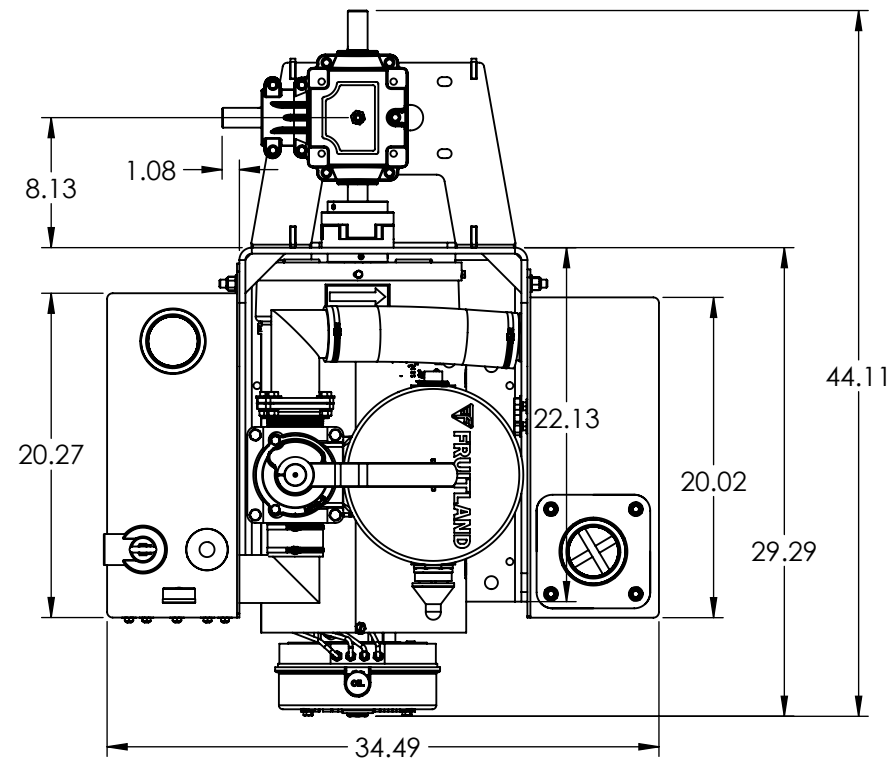
HARDWARE LIST		
ITEM #	PART #	DESCRIPTION
F1	HBI-620-252	HEX BOLT - 5/8"-11 NC x 2-1/2" LG. - Y.Z.P.
F3	HBI-500-132	HEX BOLT - 1/2"-13 NC x 1-3/8" LG. - Y.Z.P.
F4	HBI-500-152	HEX BOLT - 1/2"-13 NC x 1-1/2" LG. - Y.Z.P.
F5	HBI-500-172	HEX BOLT - 1/2"-13 NC x 1-3/4" LG. - Y.Z.P.
F6	HBI-310-102	HEX BOLT - 5/16"-18 NC x 1" LG. - Y.Z.P.
F7	HBM-100-351	HEX BOLT - M10 x 35mm LG. - Z.P.
W1	HWI-620-32	FLAT WASHER, SAE (SMALL) - 5/8" - Y.Z.P.
W2	HWI-620-42	FLAT WASHER, USS (LARGE) - 5/8" - Y.Z.P.
W3	HWI-500-32	FLAT WASHER, SAE (SMALL) - 1/2" - Y.Z.P.
W4	HWI-310-02	FLAT WASHER - 5/16" - Y.Z.P.
W5	HWM-100-01	FLAT WASHER - M10 - Z.P.
L1	HWM-100-21	LOCK WASHER - M10 - Z.P.
L2	HWI-500-22	LOCK WASHER - 1/2" - Y.Z.P.
N1	HNI-620-N2	NYLOCK NUT - 5/8"-11 NC - Y.Z.P.
N2	HNI-500-N2	NYLOCK NUT - 1/2"-13 NC - Y.Z.P.
N3	HNI-500-H2	HEX NUT - 1/2"-13 NC - Y.Z.P.
N4	HNI-310-N2	NYLOCK NUT - 5/16"-18 NC - Y.Z.P.
N5	HNM-100-H1	HEX NUT - M10 x 1.5mm - Z.P.
P1	HPI-25R-100	SPLIT PIN - 1/4" x 1" LONG

ITEM #	PART #	DESCRIPTION	QTY.
1	500LUF	500LUF VACUUM PUMP (CCW)	1
2	RF500-SM	PEDESTAL FRAME	1
3	RF500-S09L	S09 SECONDARY SHUT-OFF ASSEMBLY	1
4	RF500-M09R	M09 MUFFLER ASSEMBLY	1
4A	M09-EXM	M09 MUFFLER EXTENSION ASSEMBLY - 3" NPT	1
5	M02	M02 MUFFLER ASSEMBLY	1
6	TFMJ-870-02	M02 MUFFLER MOUNTING BRACKET	1
7	ADM24	ANGLE DRIVE MOUNT	1
8	RF500-GB400	RIGHT ANGLE GEAR BOX	1
9	HDM24	HYDRAULIC MOTOR MOUNT	1
10A	F190C-1250	F190 COUPLING C/W 42mm & 1.25" BORE FLANGES, 1/4" KEY, & INSERT	1
10H	F190C-1255	F190 COUPLING C/W 42mm & 1.25" BORE FLANGES, 5/16" KEY, & INSERT	1
11A	RF500-3NPT	3IN DIVERTER TUBE FOR 500 ELIMS	1
12	FAM09	ELBOW FLANGE - 3" - MUFFLER SIDE	2
13	RF500-57	GASKET - DIVERTER FLANGE	3
14	FA-3NPT-M	DIVERTER FLANGE - 3" NPT	3
15	HCM-080-091	HOSE CLAMP 3" - M8 (86-91mm) - MIKALOR	6
16	FAS24-03-02	RUBBER HOSE - Ø3" x 2" LONG (TO S09)	1
17	FAM09-03-13	RUBBER HOSE - Ø3" x 13" LONG (TO M09)	1
18	FAM09-03-19	RUBBER HOSE - Ø3" x 18.75" LONG (TO M02)	1
19	FVB-152-BR	BALL VALVE - 1-1/2" NPT	1
20	FVB-102-BR	BALL VALVE - 1" NPT	2
21	FPE-100-91-CS	STREET ELBOW (MxF) - 1" NPT	1
22	PRV-2	PRESSURE RELIEF VALVE - 2" NPT	1
23	VB	VACUUM RELIEF VALVE - 1-1/2" NPT	1
24	FGC-021-PV	COMPOUND PRES-VAC. GAUGE - 1/4" NPT	1



PROPRIETARY AND CONFIDENTIAL
THE INFORMATION CONTAINED IN THIS DRAWING IS THE SOLE PROPERTY OF FRUITLAND MANUFACTURING. ANY REPRODUCTION IN PART OR AS A WHOLE WITHOUT THE WRITTEN PERMISSION OF FRUITLAND MFG. IS PROHIBITED.

NAME	DATE	<p>324 Leaside Avenue Stoney Creek, Ontario, CANADA L8E 2N7 Phone: (905) 662-6552 Fax: (905) 662-9875</p>
CREATED	I.P. 7/16/2024	
CHECKED		TITLE: ELIMINATOR A & H 500 PACKAGES - COMPLETE PACKAGE OPTIONS
UNLESS OTHERWISE SPECIFIED: DIMENSIONS ARE IN INCHES TOLERANCES: FRACTIONAL OR .X = ±.015 .XX = ±.010 .XXX = ±.005		DWG. NO. ELIM A-H-500LUF
MATERIAL	--	SCALE: 1:10 WEIGHT:-- SHEET 1 OF 2
		REV 2



ELIM A-SM500LUF COMPLETE ASSEMBLY

ELIMINATOR A PACKAGE WITH 500LUF PUMP,
RIGHT ANGLE GEAR BOX & MOUNT,
M09 MUFFLER & SECONDARY SHUT-OFF.


ELIM H-SM500LUF COMPLETE ASSEMBLY

ELIMINATOR H PACKAGE WITH 500LUF PUMP,
HYDRAULIC MOTOR & MOUNT,
M09 MUFFLER & SECONDARY SHUT-OFF.

NOTE:
SHOWN WITH 500LUF PUMP
OTHER OPTIONS AVAILABLE.
ALSO, AVAILABLE OPTIONS WITH M02 MUFFLER.

**FRUITLAND ELIMINATOR A & H PACKAGE
FOR 500LUF PUMPS -
COMPLETE PACKAGE OPTIONS - DIMENSIONS**

PROPRIETARY AND CONFIDENTIAL
THE INFORMATION CONTAINED IN THIS
DRAWING IS THE SOLE PROPERTY OF
FRUITLAND MANUFACTURING. ANY
REPRODUCTION IN PART OR AS A
WHOLE WITHOUT THE WRITTEN
PERMISSION OF FRUITLAND MFG. IS
PROHIBITED.

	NAME	DATE	 324 Leaside Avenue Stoney Creek, Ontario, CANADA L8E 2N7 Phone: (905) 662-6552 Fax: (905) 662-9875
CREATED	I.P.	7/16/2024	
CHECKED			TITLE: ELIMINATOR A & H 500 PACKAGES - COMPLETE PACKAGE OPTIONS DIMENSIONING
UNLESS OTHERWISE SPECIFIED: DIMENSIONS ARE IN INCHES TOLERANCES: FRACTIONAL OR .X = ±.015 .XX = ±.010 .XXX = ±.005			DWG. NO. ELIM A-H-500LUF-DIM
MATERIAL	--		REV 2
SCALE: 1:12		WEIGHT:--	SHEET 2 OF 2